

Panel mounted inlet

Part no. 444

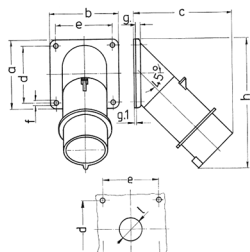


- screw terminals

Technical specifications

Ampere	32 A
Poles	5 p
Voltage	400 V
Clock position	6 h
Hertz	60-50 Hz
Connection technology	Screw terminals
Contact	standard
Protection type	IP44
Weight	275 g
Certifications	VDE

Drawing



Drawing	Amp.	16		32	
		5	3	4	5
Z MB 39	Poles				
Dim. in mm	a	85	85	85	85
	b	85	85	85	85
	c	122	126	126	129
	d	70	70	70	70
	e	70	70	70	70
	f	6.2	6.2	6.2	6.2
	g	6	6	6	6
	g.1	2	2	2	2
	h	161	163	163	170
	l	30	30	30	30
Terminal for cond. cross	1	2.5	2.5	2.5	2.5
section (mm ²) min.-max.		-2,5	-6	-6	-6