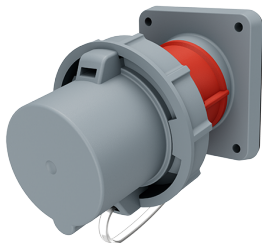


Panel mounted inlet

Part no. 1256

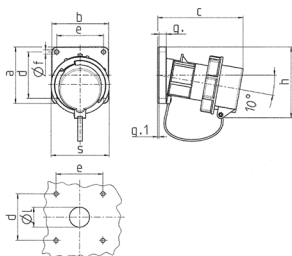


- screw terminals
- with protective cover

Technical specifications

Ampere	63 A
Poles	4 p
Voltage	400 V
Clock position	6 h
Hertz	50-60 Hz
Connection technology	Screw terminals
Contact	standard
Protection type	IP67
Weight	659 g
Certifications	EAC

Drawing



Drawing	Amp.	16			32			63		
		Poles			3	4	5	3	4	5
2 MB 62										
Dim. in mm		a	a	a	a	a	a	a	a	a
		85	85	85	85	85	108	108	108	
		85	85	85	85	85	101	101	101	
		b	b	b	b	b	b	b	b	
		132	132	131	131	137	164	164	164	
		c	c	c	c	c	c	c	c	
		70	70	70	70	70	85	85	85	
		d	d	d	d	d	d	d	d	
		70	70	70	70	70	77	77	77	
		e	e	e	e	e	e	e	e	
		6.3	6.3	6.3	6.3	6.3	6.5	6.5	6.5	
		f	f	f	f	f	f	f	f	
		11	11	11	11	11	12	12	12	
		g	g	g	g	g	g	g	g	
		2	2	2	2	2	2	2	2	
		g.1	g.1	g.1	g.1	g.1	g.1	g.1	g.1	
		2	2	2	2	2	2	2	2	
		h	h	h	h	h	h	h	h	
		100	107	108	108	111	130	130	130	
		i	i	i	i	i	i	i	i	
		70	87	94	94	102	114	114	114	
		j	j	j	j	j	j	j	j	
		30	30	30	30	30	40	40	40	
		k	k	k	k	k	k	k	k	
		1	1	2,5	2,5	2,5	6	6	6	
		Terminal for cond. cross section (mm ²) min.-max.	1	1	2,5	2,5	2,5	6	6	6
			-2,5	-2,5	-6	-6	-6	-16	-16	-16