

Panel mounted inlet

Part no. 468

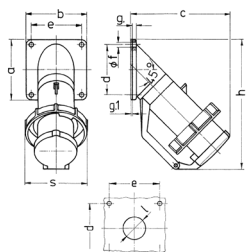


- screw terminals
- with hinged lid

Technical specifications

Ampere	32 A
Poles	4 p
Voltage	400 V
Clock position	6 h
Hertz	50-60 Hz
Connection technology	Screw terminals
Contact	standard
Protection type	IP67
Weight	363 g

Drawing



Drawing	Amp.	16				32			63	
2 MB 40	Poles	5	3	4	5	4	5	4	5	
Dim. in mm	a	85	85	85	85	114	114	114	114	
	b	85	85	85	85	114	114	114	114	
	c	141	141	141	144	180	180	180	180	
	d	70	70	70	70	90	90	90	90	
	e	70	70	70	70	90	90	90	90	
	f	6.2	6.2	6.2	6.2	6.2	6.2	6.2	6.2	
	g	6	6	6	6	6	6	6	6	
	g-1	2	2	2	2	2	2	2	2	
	h	181	181	181	188	242	242	242	242	
	s	86	93	93	100	113	113	113	113	
	l	30	30	30	30	40	40	40	40	
Terminal for cond. cross section (mm²) min.-max.	1	2.5	2.5	2.5	2.5	4	4	4	4	
		-2.5	-6	-6	-6	-16	-16	-16	-16	