

Panel mounted inlet

Part no. 479

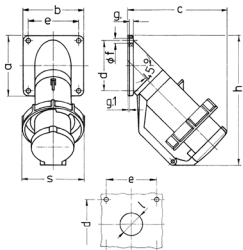


- screw terminals
- with hinged lid

Technical specifications

Ampere	63 A
Poles	5 p
Voltage	230 V
Clock position	9 h
Hertz	60-50 Hz
Connection technology	Screw terminals
Contact	standard
Protection type	IP67
Weight	791 g

Drawing



Drawing	Amp.	16				32		63	
		2 MB 40		3	4	5	4	5	
Dim. in mm	Poles	5	3	4	5	4	5		
	a	85	85	85	85	114	114		
	b	85	85	85	85	114	114		
	c	141	141	141	144	180	180		
	d	70	70	70	70	90	90		
	e	70	70	70	70	90	90		
	f	6.2	6.2	6.2	6.2	6.2	6.2		
	g	6	6	6	6	6	6		
	g-1	2	2	2	2	2	2		
	h	181	181	181	188	242	242		
	s	86	93	93	100	113	113		
	l	30	30	30	30	40	40		
	Terminal for cond. cross section (mm²) min.-max.	1	2.5	2.5	2.5	4	4		
		-2.5	-6	-6	-6	-16	-16		