

PRODUCT DATASHEET

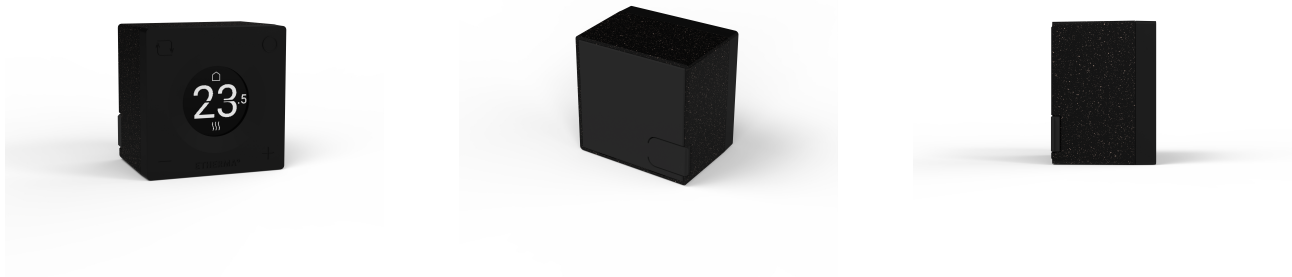
Type: ET-SMARTCUBE-TH-B
Art. Nr.: 46407



9120129932080

Short description

Wireless thermostat in conjunction with SMARTBOX wireless receiver, Wi



Product Description

The SMARTCUBE radio thermostat was specially developed for controlling LAVA infrared heaters and meets the requirements of the Ecodesign Directive. It can be installed flexibly - either surface-mounted, in standard installation frames or free-standing - and adapts perfectly to any environment thanks to the choice of black or white housing colors and individually adjustable display color. The device has an energy-saving eINK display and is controlled via Bluetooth Low Energy (BLE). The integrated 750 mAh (3.7 V) battery is charged via USB-C. The usable temperature range is +5 to +40 °C. The dimensions are 55.4 × 55.4 × 13 mm with protection class IP30. Available in white or black. This controller fulfills the following control functions: TW (f2 / f3 / f4 / f5 / f8)

ETIM characteristics

Regulation type on/off	✓	Measuring range	5 40 Degrees celsius
Regulation type modulating	✗	Number of heater outputs	0
Communications protocol	Other	Number of cooler outputs	0
Type of power supply	Battery	Number of ventilation outputs	0
Connection	Wireless	Differential value	0.2 2 Kelvin
With receiver	✗	Number of switching programmes	1
External sensor	✗	RAL-number	9005
With thermal feedback	✓	Width	55.4 Millimetre
Control characteristic	Other	Depth	55.4 Millimetre
Adaptive (self-learning)	✓	Height	41 Millimetre
Suitable for heating	✓		
Suitable for cooling	✗		
Ventilation	✗		
Adjustable differential	✓		
Sensor/feeler type	Other		
Temperature readable	✓		
With display	✓		
Type of clock	Year clock		
Clock model	Digital		
Overtime switch	✗		
Optimisation	✓		
With tap water circuit	✗		
Operation	Touch screen		
Suitable for floor heating control	✗		
Suitable for district heating control	✗		
Remote operation possible	✓		

Created on: 27/06/2025

IFTTT support available	✕
With presence perception	✕
Weather-dependent control system	✕
Degree of protection (IP)	IP30
Colour	Black