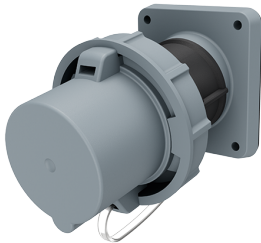


Panel mounted inlet

Part no. 1257

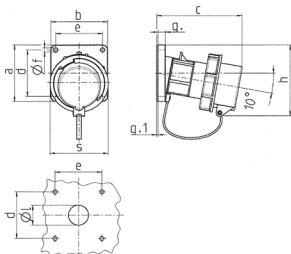


- screw terminals
- with protective cover

Technical specifications

Ampere	63 A
Poles	4 p
Voltage	500 V
Clock position	7 h
Hertz	50-60 Hz
Connection technology	Screw terminals
Contact	standard
Protection type	IP67
Weight	659 g
Certifications	EAC

Drawing



Drawing	Amp.	16			32			63		
		Poles			3	4	5	3	4	5
2 MB 62										
Dim. in mm										
a		85	85	85	85	85	108	108	108	
b		85	85	85	85	85	101	101	101	
c		132	132	131	131	137	164	164	164	
d		70	70	70	70	70	85	85	85	
e		70	70	70	70	70	77	77	77	
f		6.3	6.3	6.3	6.3	6.3	6.5	6.5	6.5	
g.		11	11	11	11	11	12	12	12	
g.1		2	2	2	2	2	2	2	2	
h		100	107	108	108	111	130	130	130	
s		70	87	94	94	102	114	114	114	
l		30	30	30	30	30	40	40	40	
Terminal for cond. cross		1	1	2,5	2,5	2,5	6	6	6	
section (mm ²) min.-max.		-2,5	-2,5	-6	-6	-6	-16	-16	-16	