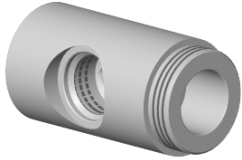


09 11 03 051



|   |                                |                 |
|---|--------------------------------|-----------------|
|    | Brushed Dark Platinum          | 09 11 03 051-99 |
|    | Chrome                         | 09 11 03 051-00 |
|    | Brushed Platinum               | 09 11 03 051-06 |
|    | Platinum                       | 09 11 03 051-08 |
|    | Matte White                    | 09 11 03 051-10 |
|    | Dark Chrome                    | 09 11 03 051-19 |
|    | Light Gold (PVD)               | 09 11 03 051-26 |
|    | Brushed Light Gold (PVD)       | 09 11 03 051-27 |
|   | Brushed Durabronze (23kt Gold) | 09 11 03 051-28 |
|  | Matte Black                    | 09 11 03 051-33 |
|  | Brushed Bronze (PVD)           | 09 11 03 051-42 |
|  | Brushed Champagne (22kt Gold)  | 09 11 03 051-46 |
|  | Champagne (22kt Gold)          | 09 11 03 051-47 |
|  | Brushed Chrome                 | 09 11 03 051-93 |



Connection Ø 37 x 68,5 mm - Brushed Dark Platinum

SPARE PARTS

---

09 11 03 051



Connection Ø 37 x 68,5 mm - Brushed Dark Platinum

---

SPARE PARTS

09 11 03 051