

## PRODUCT DATASHEET

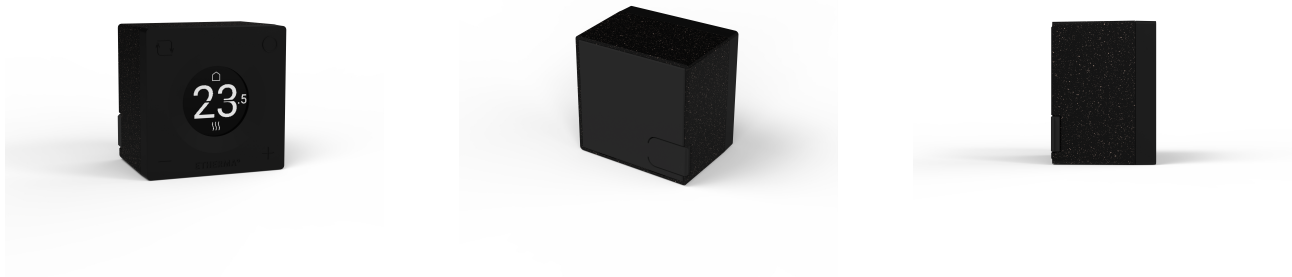
**Type:** ET-SMARTCUBE-TH-B  
**Art. Nr.:** 46407



9120129932080

### Short description

Wireless thermostat in conjunction with SMARTBOX wireless receiver, Wi



### Product Description

The SMARTCUBE radio thermostat was specially developed for controlling LAVA infrared heaters and meets the requirements of the Ecodesign Directive. It can be installed flexibly - either surface-mounted, in standard installation frames or free-standing - and adapts perfectly to any environment thanks to the choice of black or white housing colors and individually adjustable display color. The device has an energy-saving eINK display and is controlled via Bluetooth Low Energy (BLE). The integrated 750 mAh (3.7 V) battery is charged via USB-C. The usable temperature range is +5 to +40 °C. The dimensions are 55.4 × 55.4 × 13 mm with protection class IP30. Available in white or black. This controller fulfills the following control functions: TW (f2 / f3 / f4 / f5 / f8)

### ETIM 10 Characteristics

<b>Regulation type on/off</b>	✓	<b>Measuring range</b>	5 40 Degrees celsius
<b>Regulation type modulating</b>	✗	<b>Number of heater outputs</b>	0
<b>Communications protocol</b>	Other	<b>Number of cooler outputs</b>	0
<b>Type of power supply</b>	Battery	<b>Number of ventilation outputs</b>	0
<b>Connection</b>	Wireless	<b>Differential value</b>	0.2 2 Kelvin
<b>With receiver</b>	✗	<b>Number of switching programmes</b>	1
<b>External sensor</b>	✗	<b>Max. contact voltage</b>	0 Volt
<b>With thermal feedback</b>	✓	<b>Max. contact load</b>	0 Ampere
<b>Control characteristic</b>	Other	<b>RAL-number</b>	9005
<b>Adaptive (self-learning)</b>	✓	<b>Width</b>	55.4 Millimetre
<b>Suitable for heating</b>	✓	<b>Depth</b>	55.4 Millimetre
<b>Suitable for cooling</b>	✗	<b>Height</b>	41 Millimetre
<b>Ventilation</b>	✗	<b>Standby power consumption (solstandby)</b>	0.1 Watt
<b>Adjustable differential</b>	✓		
<b>Sensor/feeler type</b>	Other		
<b>Temperature readable</b>	✓		
<b>With display</b>	✓		
<b>Type of clock</b>	Year clock		
<b>Clock model</b>	Digital		
<b>Overtime switch</b>	✗		
<b>Optimisation</b>	✓		
<b>With tap water circuit</b>	✗		
<b>Operation</b>	Touch screen		
<b>Suitable for floor heating control</b>	✗		
<b>Suitable for district heating control</b>	✗		

Created on: 16/12/2025

<b>Remote operation possible</b>	✓
<b>IFTTT support available</b>	✗
<b>With presence perception</b>	✗
<b>Weather-dependent control system</b>	✗
<b>Contact type</b>	Electronic
<b>Degree of protection (IP)</b>	IP30
<b>Colour</b>	Black
<b>Class of the temperature control</b>	I