

Panel mounted receptacle

Part no. 1275

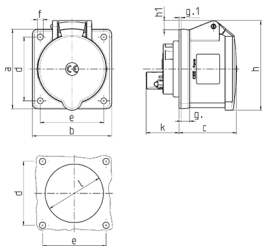


- screw terminals
- flange: 75 x 75 mm
- fixing hole spacing: 60 x 60 mm
- straight
- also suitable for installation in cable ducts and columns

Technical specifications

Ampere	32 A
Poles	5 p
Voltage	230 V
Clock position	9 h
Hertz	50-60 Hz
Connection technology	Screw terminals
Contact	standard
Protection type	IP 44
Flange	75x75 mm
Fixing hole	60x60 mm
Weight	232 g
Declaration of Conformity	EAC

Drawing



Drawing 1 MB 360	Amp. Poles	16			32		
		3	4	5	3	4	5
Dim. in mm	a	75	75	75	75	75	75
	b	75	75	75	75	75	75
	c	53	53	55	64	64	64
	d	60	60	60	60	60	60
	e	60	60	60	60	60	60
	f	5.5	5.5	5.5	5.5	5.5	5.5
	g	8	8	8	8	8	8
	g.1	2	2	2	2	2	2
	h	75	80	85	89	89	95
	h1		6	9	11	11	12
	k	31	32	32	39	39	17
	l	43	52	54	58	58	54
Terminal for cond. cross section (mm ²) min.-max.		1.5	1.5	1.5	2.5	2.5	2.5
		-4	-4	-4	-10	-10	-10