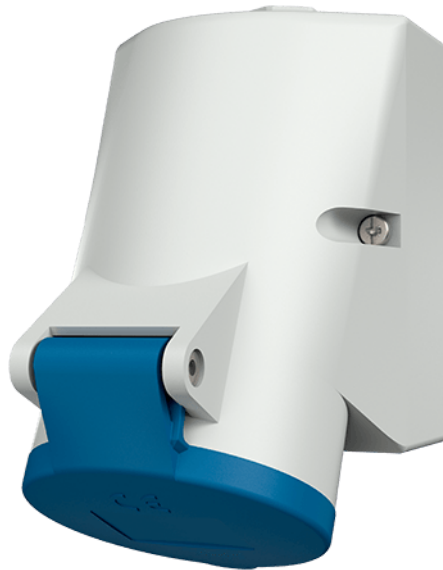


Product Carbon Footprint Report



AMAD Mennekes Holding GmbH & Co. KG

📦 Wall mounted receptacle TwinCONTACT 1720



Issue date	01/15/2026
Reporting period	2025
Production facility	MENNEKES Elektrotechnik GmbH & Co. KG
System boundary	Cradle-to-gate

Table of contents

01 Product information

02 Emission distribution

01 Product information



16A3P 6H230V wall mounted receptacle TwinCONTACT IP 44;
fixing points inside housing; screwless installation technique

Product name	Wall mounted receptacle TwinCONTACT 1720
Product ID	1720

CO₂ Footprint (PCF)
0.95 kgCO₂e

Gross weight¹
0.19 kg

Net weight²
0.17 kg

1: Gross weight refers to the sum of all raw materials required to make the product, including auxiliary materials.

2: Net weight refers to the weight of the final product.

Balance scope: Greenhouse gas emissions were recorded "Cradle-to-Gate". The balance sheet includes significant emissions from materials, production processes, and transport from suppliers. It does not include packaging, operating supplies, auxiliary materials, and transport to customers. In the absence of high-quality data to calculate emissions of the product, cut-off criteria were applied to exclude inputs contributing less than 1% to the total mass and energy flows, ensuring the exclusion of negligible impacts. Furthermore, it was ensured that the sum of all excluded inputs wasn't more than 5% of the total mass or energy flows. Data quality was assessed based on ISO 14067 guidelines, prioritizing primary data for key processes and using verified secondary data for less critical inputs to ensure robustness and reliability of the PCF calculation.

02 Emission distribution



Materials
98.61%



Transport
1.38%



Waste
< 1.00%



Production processes
0.00%