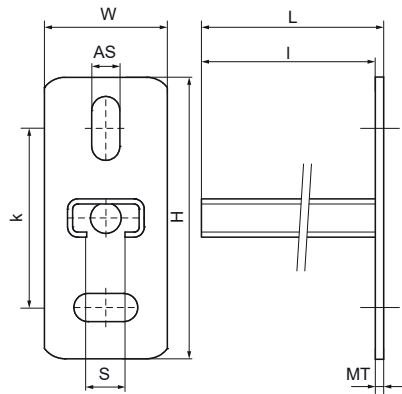


Walraven RapidRail® Stainless Steel Cantilever Arm

(M2505)

fixing to wall or ceiling



Features & benefits

- wall plate with welded C-profile
- slots at 90° to each other to simplify fixing
- CO₂ welded
- material: stainless steel 1.4404 (AISI 316L)
- for more information about the max. allowed load (Faz) please refer to the loading tables or our online datasheet 'Technical Details Walraven RapidRail®'
- Tested values in combination with Walraven RapidStrut® Rail 41x41x2.5mm.



| Product Number | Type | Length | Total Height | Total Width | Total Length | Material Thickness | Anchoring Slot | Profile Opening | Heart To Heart Distance |
|------------------|-------|----------|--------------|-------------|--------------|--------------------|----------------|-----------------|-------------------------|
| Reference Letter | | <i>l</i> | <i>H</i> | <i>W</i> | <i>L</i> | <i>MT</i> | <i>AS</i> | <i>S</i> | <i>k</i> |
| Unit description | | mm | mm | mm | mm | mm | mm | mm | mm |
| 6607120 | 30x15 | 200 | 110 | 48 | 205 | 5.00 | 25x11 | 15 | 70 |
| 6607230 | 30x30 | 300 | 110 | 48 | 305 | 5.00 | 25x11 | 15 | 70 |
| 6607250 | 30x30 | 500 | 110 | 48 | 505 | 5.00 | 25x11 | 15 | 70 |