

Panel mounted receptacle

Part no. 2584

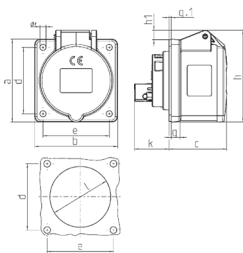


- screw terminals
- highly heat resistant contact carrier
- nickel plated contacts
- straight

Technical specifications

Ampere	32 A
Poles	7 p
Voltage	400 V
Clock position	6 h
Hertz	60-50 Hz
Connection technology	Screw terminals
Contact	nickel plated contacts, highly heat resistant contact carrier
Protection type	IP44
Flange	75x75 mm
Fixing hole	60x60 mm
Weight	313 g

Drawing



Drawing	Amp.	16	32
1 MB 247	Poles	7	7
Dim. in mm	a	75	85
	b	75	75
	c	53	65
	d	60	60
	e	60	60
	f	5.5	5.5
	g	8	8
	g-1	2	2
	h	83	100
	h1	8	12
	k	32	39
l	54	62	
Terminal for cond. cross section (mm ²) min.-max.		1.5	2.5
		-4	-10