

VAIA Single-lever bath mixer with stand pipe for free-standing assembly with hand shower set - Chrome

VAIA

25 863 809 Product version from 4/1/2024



- spout: circular, air-enriched flow
- max. flow 24.6 l/min at 3 bar flow pressure
- Hand shower: COMPACT RAIN, max. flow rate 6.8 l/min (at 3 bar)
- bar-type hand shower with anti-scale system
- 286mm projection
- pivotable spout 360°
- automatic bath/shower diverter
- total height 1057 - 1127 mm
- wall bracket
- stand pipe height 565 - 635 mm
- height up to aerator 925 – 995 mm
- slide-on rosettes Ø 135 mm
- metal shower hose 1250mm with integrated anti-twist protection
- WRAS

Intrinsic protection against back flow.

Intrinsic protection against back flow.

	Chrome	25 863 809-00
	Brushed Platinum	25 863 809-06
	Platinum	25 863 809-08
	Dark Chrome	25 863 809-19
	Brushed Durabronze (23kt Gold)	25 863 809-28
	Brushed Dark Brass (PVD)	25 863 809-39
	Brushed Bronze (PVD)	25 863 809-42
	Brushed Dark Bronze (PVD)	25 863 809-43
	Brushed Champagne (22kt Gold)	25 863 809-46
	Champagne (22kt Gold)	25 863 809-47
	Brushed Dark Platinum	25 863 809-99

Required miscellaneous



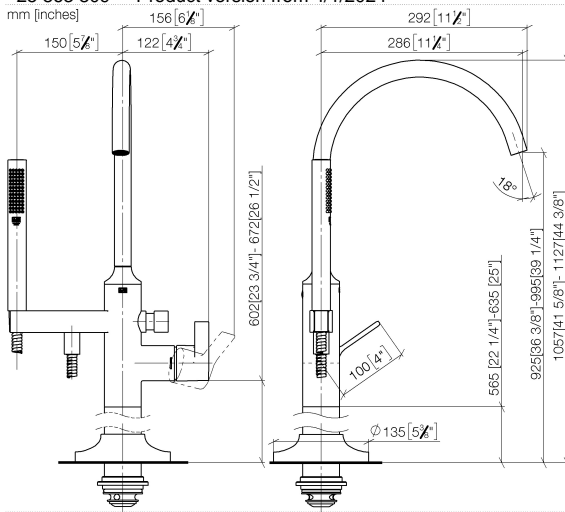
- Concealed floor mounting -**
- min. recess depth 80 mm
 - max. recess depth 150 mm

35 945 970 90

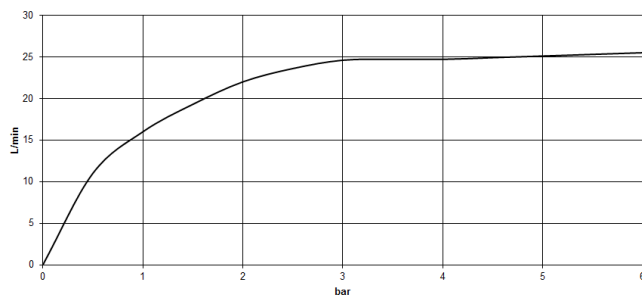
VAIA Single-lever bath mixer with stand pipe for free-standing assembly with hand shower set - Chrome

VAIA

25 863 809 Product version from 4/1/2024



Flow rate chart



Codes & Standards

ASME A112.18.1	cUPC	DIN 4109	EN 1717
ISO 3822	Scottish Water Byelaws	UK Water Supply Regulations	Ü-Zeichen



VAIA Single-lever bath mixer with stand pipe for free-standing assembly with hand shower set - Chrome

VAIA

25 863 809 Product version from 4/1/2024

Certificates and sustainability

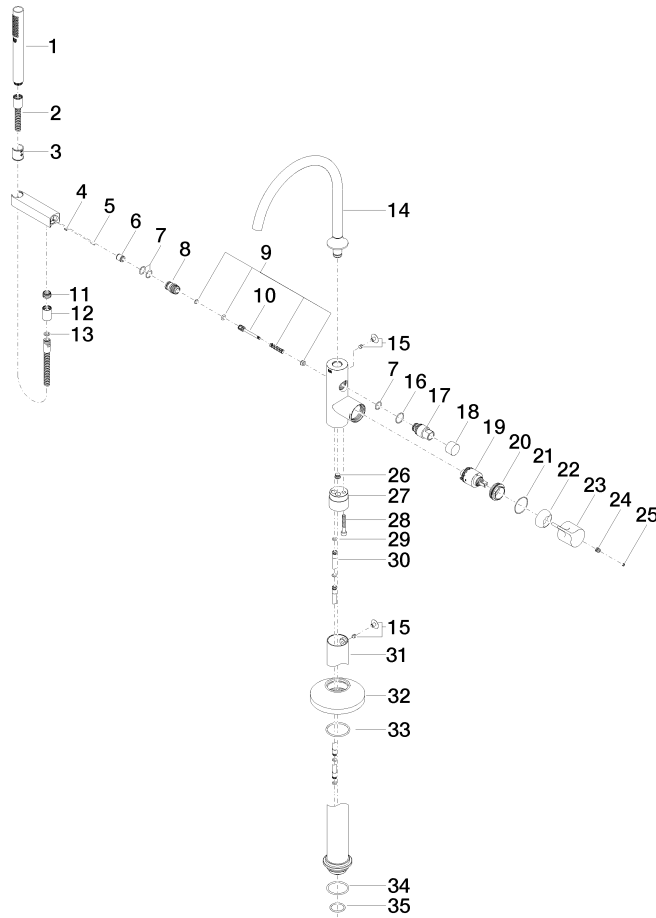
Belgaqua_19_77 IAPMO_4976 Belgaqua_24-003-2 WRAS_250502 EPD-DOR-20230287
-IBA1-EN
Environmental.prod
uct-declarat

LGA_39

VAIA Single-lever bath mixer with stand pipe for free-standing assembly with hand shower set - Chrome

VAIA

25 863 809 Product version from 4/1/2024





VAIA Single-lever bath mixer with stand pipe for free-standing assembly with hand shower set - Chrome

VAIA

25 863 809 Product version from 4/1/2024

Spare parts list

No.	Item Number	Name	Quantity used	Delivery time
26	04 31 20 039 11 90	Plug with O-ring M12 x 1 -	1.00	14
6	90 23 01 141 00 90	Back-flow preventer -	1.00	14
17	09 21 34 081 20-00	Diverter Ø 30 x 56 mm - Chrome	1.00	20
16	09 14 10 112 90	O-Ring 24,0 x 2,0 mm -	1.00	14
35	09 14 10 018 90	O-Ring EPDM 70 32,0 x 3,0 mm -	1.00	14
18	09 20 88 002-00	Pull button Ø 30 x 20 mm - Chrome	1.00	20
4	09 31 11 058 90	Mounting Threaded pin with hexagon socket with cup point M5 x 8 mm -	1.00	14
2	90 30 02 072 00-00	Metal shower hose 1/2" x 3/8" x 1250 mm - Chrome	1.00	20
33	90 14 10 129 00 90	O-Ring 52 x 3,5 mm -	1.00	14
27	09 24 03 152 20-00	Connection - Chrome	1.00	82
25	90 31 20 087 00-00	Plug with O-ring Ø 7 x 2,1 mm - Chrome	1.00	20
20	09 24 04 298 90	Mounting Ø 42 x 17 mm -	1.00	14
32	09 27 80 022-00	Rosette Ø 135 x 40 mm - Chrome	1.00	20
31	04 28 22 030 00-00	Pipe Ø 71,5 x 697,5 mm - Chrome	1.00	20
11	09 24 03 069 90	Nipple Ø 20 x 11,5 mm -	1.00	14
29	09 14 10 139 90	O-Ring EPDM 70 9,0 x 2,0 mm -	2.00	14
21	09 14 10 037 90	O-Ring 42,0 x 1,5 . mm -	1.00	14
28	09 30 30 111 90	Mounting Cylinder head screw with hexagon socket M8 x 50 mm -	1.00	14
9	90 16 02 023 00 90	Diverter Repair kit, bath deck mounting 15 x 50 x 15 mm -	1.00	14
10	09 31 09 102 20-00	Pull rod for diverter Ø 12 x 70 mm - Chrome	1.00	20
3	09 18 40 118 90	Sleeve Ø 27,5 x 30 mm -	1.00	14
7	90 14 10 010 00 90	O-Ring EPDM 70 17,0 x 2,0 mm -	3.00	14
5	09 31 11 040 90	Straight pin Ø 6 x 12 mm -	1.00	14
8	09 24 03 153 20-00	Nipple Ø 24 x 34,5 mm - Chrome	1.00	20
30	04 28 22 025 00 90	Supply pipe Ø 12 x 70 mm -	2.00	14
24	90 31 11 030 00 90	Mounting Threaded pin with hexagon socket with cup point M5 x 5 mm -	1.00	14
19	90 15 05 039 00 90	Cartridge blue Ø 40 x 75 mm -	1.00	14
15	04 31 20 036 00 90	Plug for bath deck mounting Cover with threaded pin -	2.00	14
34	09 14 10 084 90	O-Ring EPDM 70 48 x 3,5 mm -	1.00	14
12	90 21 02 069 00-00	Cover/sleeve M20 x 1 - Chrome	1.00	20
22	09 28 30 036-00	Cover Ø 46 x 18 mm - Chrome	1.00	20
14	90 28 22 327 00-00	Spout for bath deck mounting free-standing 304 mm, 25,2 l/min. - Chrome	1.00	20
13	90 14 20 026 00 90	Washer 14 x 8 x 2 mm Centellen WS 3820 -	1.00	14
1	90 12 11 140 41-00	Bar-type hand shower 6,8 l/min - Chrome	1.00	-
Spare part can no longer be ordered, please order the replacement item				
23	90 20 80 073 00-00	handle	1.00	-
Spare part can no longer be ordered, please order the replacement item				