



## PP/staal overschuifflens, metrisch, voor moflanssystemen

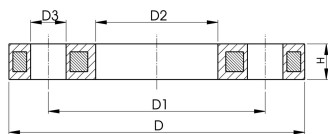
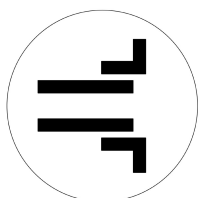
### uitvoering:

- flensboring PN10
- PP (30% glasvezelversterkt) met stalen binnenwerk
- UV-resistent toepasbaar bij buitenapplicaties
- aansluitmaten volgens ISO 7005, EN 1092, BS 4504, DIN 2501

AL = aantal gaten

1 aansluitmaten volgens ISO 2536 DN125, geschikt voor flensadapter d125/DN100

2 aansluitmaten volgens ISO 2536 DN225, geschikt voor flensadapter d250/DN250



| PN<br>[bar] | DN<br>[mm] | d<br>[mm] | Code               | SP  | gewicht<br>[kg] | D1<br>[mm] | D3<br>[mm] | D2<br>[mm] | D<br>[mm] | H<br>[mm] | AL | SC  |
|-------------|------------|-----------|--------------------|-----|-----------------|------------|------------|------------|-----------|-----------|----|-----|
| 16          | 15         | 20        | <b>727 700 206</b> | 72  | 0,216           | 65         | 14         | 28         | 95        | 12        | 4  | M12 |
| 16          | 20         | 25        | <b>727 700 207</b> | 50  | 0,279           | 75         | 14         | 34         | 105       | 12        | 4  | M12 |
| 16          | 25         | 32        | <b>727 700 208</b> | 34  | 0,429           | 85         | 14         | 42         | 115       | 16        | 4  | M12 |
| 16          | 32         | 40        | <b>727 700 209</b> | 20  | 0,621           | 100        | 18         | 51         | 140       | 16        | 4  | M16 |
| 16          | 40         | 50        | <b>727 700 210</b> | 17  | 0,722           | 110        | 18         | 62         | 150       | 20        | 4  | M16 |
| 16          | 50         | 63        | <b>727 700 211</b> | 15  | 1,084           | 125        | 18         | 78         | 165       | 20        | 4  | M16 |
| 16          | 65         | 75        | <b>727 700 212</b> | 11  | 1,349           | 145        | 18         | 92         | 185       | 20        | 4  | M16 |
| 16          | 80         | 90        | <b>727 700 213</b> | 9   | 1,369           | 160        | 18         | 110        | 200       | 20        | 8  |     |
| 16          | 100        | 110       | <b>727 700 214</b> | 13  | 1,522           | 180        | 18         | 133        | 220       | 20        | 8  |     |
| 16          | 125        | 125       | <b>727 700 215</b> | 12  | 2,475           | 210        | 18         | 150        | 250       | 24        | 8  |     |
| 16          | 125        | 140       | <b>727 700 216</b> | 12  | 2,033           | 210        | 18         | 167        | 250       | 24        | 8  |     |
| 16          | 150        | 160       | <b>727 700 217</b> | 200 | 3,164           | 240        | 22         | 190        | 285       | 24        | 8  |     |
| 16          | 200        | 200       | <b>727 700 219</b> | 154 | 6,143           | 295        | 22         | 226        | 340       | 27        | 8  |     |
| 16          | 200        | 225       | <b>727 700 220</b> | 0   | 4,448           | 295        | 22         | 250        | 340       | 27        | 8  |     |
| 16          | 250        | 250       | <b>727 700 021</b> | 0   | 7,179           | 350        | 22         | 277        | 395       | 30        | 12 |     |
| 16          | 225        | 250       | <b>727 700 221</b> | 1   | 8,340           | 325        | 22         | 277        | 395       | 30        | 8  |     |
| 16          | 250        | 280       | <b>727 700 222</b> | 108 | 5,547           | 350        | 22         | 310        | 395       | 30        | 12 |     |
| 16          | 300        | 315       | <b>727 700 223</b> | 55  | 6,980           | 400        | 22         | 348        | 445       | 34        | 12 |     |
| 16          | 350        | 355       | <b>727 700 224</b> | 40  | 12,465          | 460        | 23         | 388        | 515       | 40        | 16 |     |
| 16          | 400        | 400       | <b>727 700 225</b> | 40  | 17,607          | 515        | 26         | 442        | 574       | 40        | 16 |     |

De technische gegevens zijn niet bindend en houden geen garanties in van eigenschappen. Wijzigingen voorbehouden. Onze algemene verkoopvoorwaarden zijn van toepassing.

Georg Fischer Piping Systems Ltd, Postfach, CH-8201 Schaffhausen/Switzerland  
 Phone +41 -(0)52-631 1111  
 e-mail: [info.ps@georgfischer.com](mailto:info.ps@georgfischer.com)  
 Internet: <http://www.gfps.com>