

## Panel mounted receptacle with TwinCONTACT

Part no. 154

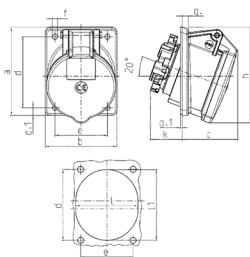


- screwless spring terminals
- suitable for through wiring
- 20° inclination

### Technical specifications

Ampere	16 A
Poles	4 p
Voltage	400 V
Clock position	6 h
Hertz	50-60 Hz
Connection technology	Screwless - TwinCONTACT
Contact	standard
Protection type	IP44
Flange	87x71 mm
Fixing hole	70x52 mm
Inclination	20 °
Weight	120 g

### Drawing



Drawing 1 MB 650 Dim. in mm	Amp. Poles	16	
		4	5
a		87	87
b		71	71
c		58	57
d		70	70
d.1		7.5	7.5
e		52	52
f		5.1	5.1
g		6	6
g-1		2	2
h		92	95
k		31	32
l		61	62
l1		-	72
Terminal for cond. cross section (mm <sup>2</sup> ) min.-max.		1.5	1.5
		-4	-4