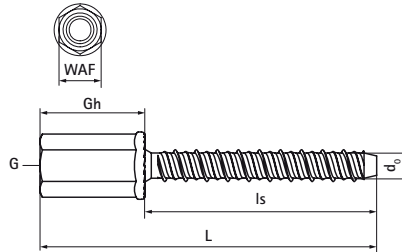
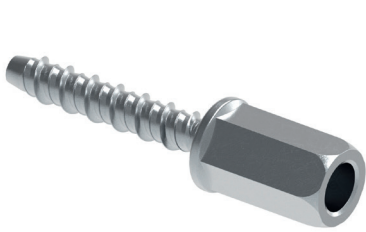


Walraven W-LX-N Concrete Screw

(L0359)

unibody zinc-plated concrete screw with an internal M8/M10 thread



Features & benefits

- very high load capacity
- approved for use in precast prestressed hollow core slabs
- up to 3 anchoring depths provide maximum installation flexibility
- reduced edge and anchor spacing distances
- removable
- unique tip and thread geometry prevents concrete spalling
- fire resistance class R30-R120 for design of anchorages under exposure to fire
- complies with VdS CEA 4001:2024-01 (08) for applications with sprinkler systems in concrete elements
- substrate type: cracked concrete, non-cracked concrete, precast pre-stressed hollow core slabs
- for loads and more information, refer to the product data sheet and/or the ETA report
- material: steel
- zinc plated

Product Number	VVS Number	Connection Thread	Connection Height	Screw Length	Anchor Size	Width Across Flats	Drill Hole Diameter	Total Height	Total Width	Total Length
Reference letter		G	Gh	Is		WAF	d0	H	W	L
Unit description			mm	mm		mm	mm	mm	mm	mm
62433304	018049623	M8/M10	25	35	6	13	6	16	16	60
62433305	018049625	M8/M10	25	55	6	13	6	16	16	80
62433314		M8	15	35	6	13	6	16	16	50
62433315		M8	15	55	6	13	6	16	16	70
62433324		M10	15	35	6	13	6	16	16	50
62433325		M10	15	55	6	13	6	16	16	70