

## Panel mounted receptacle

Part no. 3641

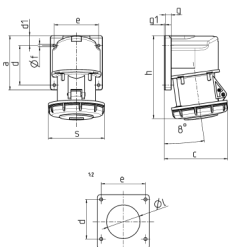


- screw terminals
- **X-CONTACT**
- frame terminals
- angled 80°
- partially assembled

## Technical specifications

Ampere	63 A
Poles	5 p
Voltage	400 V
Clock position	6 h
Hertz	50-60 Hz
Connection technology	Screw terminals
Contact	X-CONTACT
Protection type	IP67
Flange	110x106 mm
Fixing hole	80x90 mm
Inclination	80 °
Weight	796 g

## Drawing



Drawing	Amp.	63
1 MB 561	Poles	5
Dim. in mm	a	110
	b	106
	c	129
	d	80
	d1	20
	e	90
	f	5.5
	g	12
	g1	2
	h	168
	l	68
	s	118