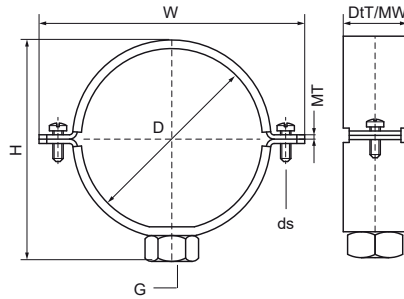


Walraven 434 Clamp (1/2") (zp)

(B3526)

for PE-pipe



Features & benefits

- two-screw clamp
- as guiding clamp for PE-Pipe
- for rigid fixing point fastening it is necessary to use metal clamp liners (Part No. 4337XXX)
- screws secured with anti-loss washer
- material: steel
- zinc plated



Product Number	Outside Pipe Diameter	DN	Connection Thread	Total Height	Total Width	Total Depth	Material Width	Material Thickness	Screw Size	Maximum Allowed Load Faz	Approvals
Reference Letter	D	D	G	H	W	DtT	MW	MT	ds	Fa,z	
Unit description	mm			mm	mm	mm	mm	mm		N	
4383040	40	DN 32	G1/2"	68	84	30	30	3.00	M6	1,100	ITB (KOT), EPD
4383050	50	DN 40	G1/2"	78	94	30	30	3.00	M6	1,100	ITB (KOT), EPD
4383056	56	DN 50	G1/2"	84	100	30	30	3.00	M6	1,100	ITB (KOT), EPD
4383063	63	-	G1/2"	92	108	30	30	3.00	M6	1,100	ITB (KOT), EPD
4383075	75	DN 70	G1/2"	104	119	30	30	3.00	M6	1,100	ITB (KOT), EPD
4383090	90	DN 80	G1/2"	118	134	30	30	3.00	M6	1,100	ITB (KOT), EPD
4383110	110	DN 100	G1/2"	139	154	30	30	3.00	M6	1,100	ITB (KOT), EPD
4383125	125	DN 125	G1/2"	155	169	30	30	3.00	M6	1,100	ITB (KOT), EPD
4383160	160	DN 150	G1/2"	190	204	30	30	3.00	M6	1,100	ITB (KOT), EPD