

Product data sheet Spirotech

Product name

Insulation HPF 28mm, 1", 1¼"

Product properties

The SpiroTrap HPF can be fully enclosed with prefabricated insulation shells, made of expanded polypropylene. They encase the relevant components, including the pipe connection to secure optimal insulation.

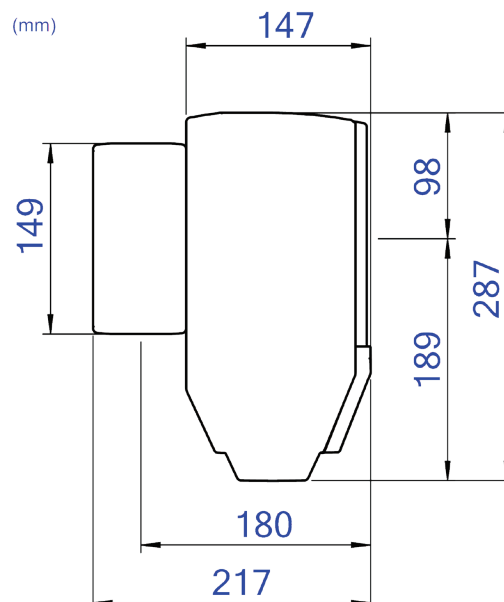
Article number

TUF125

Product image



Product dimensions



Product data sheet Spirotech

ETIM product data

Height	287 mm
Material insulation	Expanded polypropylene (EPP)
Material casing	Other

Temperature protected till	110 °C
Colour	Black
Diameter	147 mm

Disclaimer

This product sheet has been compiled with the greatest possible care. Nevertheless, it may contain errors or omissions. For the most current and correct information we refer you to our website.

