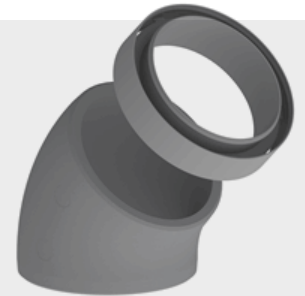


## TECHNICAL DATA SHEET

# DucoFlex Insulated 45° bend with integrated coupler D160

The DucoFlex Insulated 45° bend D160 is a smooth and insulated elbow for ventilation ducts, made of EPS. The good insulating properties of this product prevent a thermal bridge and therefore condensation when polluted air is extracted or outside air is supplied. Energy losses are also avoided. In addition to the good thermal insulation value, the material used also dampens noise and is very easy to handle. A connection piece is supplied as standard that connects the various EPS components in a quick and airtight manner.



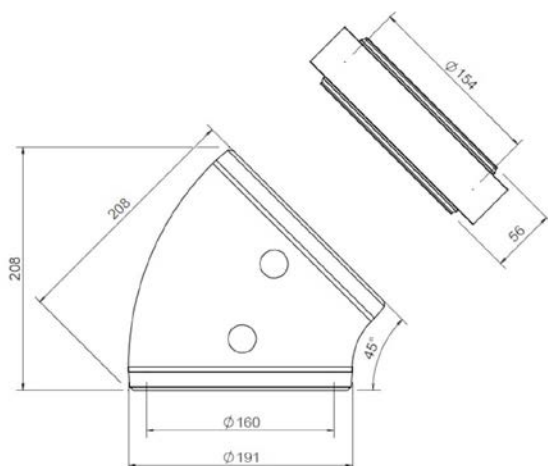
### Physical characteristics

<b>Article number</b>	0000-4573
<b>Contents</b>	Insulated 45° bend D160 + integrated coupler D160
<b>Width x Height x Depth (mm)</b>	Without sleeve: 191 x 208 x 208 With sleeve: 197 x 230 x 235
<b>Connection diameter (mm)</b>	160 (inner size)
<b>Weight (kg)</b>	Without sleeve: 0.055 With sleeve: 0.180
<b>Wall thickness (mm)</b>	15,5
<b>Material</b>	Expanded polystyrene (EPS)
<b>Colour</b>	Grey
<b>Packaging</b>	Packed in seal per piece

### Technical features

<b>Range of application</b>	Extract Air / Supply Air
<b>Maximum flow rate</b>	Extraction: 400 m <sup>3</sup> /h Supply: 325 m <sup>3</sup> /h
<b>Air tightness class (ATC)</b>	2 (D)
<b>Thermal resistance (W/mK)</b>	0,032
<b>R-value [m<sup>2</sup>K/W]</b>	0,48
<b>Operating temperature</b>	from -25° to +80°C
<b>Fire rating EN 13501-1</b>	E

Air velocity (m/s)	Flow rate (m <sup>3</sup> /h)	Pressure loss (Pa)
1	72	0,1
2	145	0,4
3	217	0,9
4	290	1,6
6	434	3,6



### Pressure drop: inlet and outlet

