

SPIROTECH SPECIFICATION SHEET



Product: Insulation Set
Universal
Trap/Universal Vent

Type: TUF075
Date: 10/29/2025

Customer:

Project:

Reference:

Design criteria

Suitable for: UE022XJF, UE075XJF

Testing and quality assurance

According to EnEV: yes

According to B2 (DIN 4102): yes

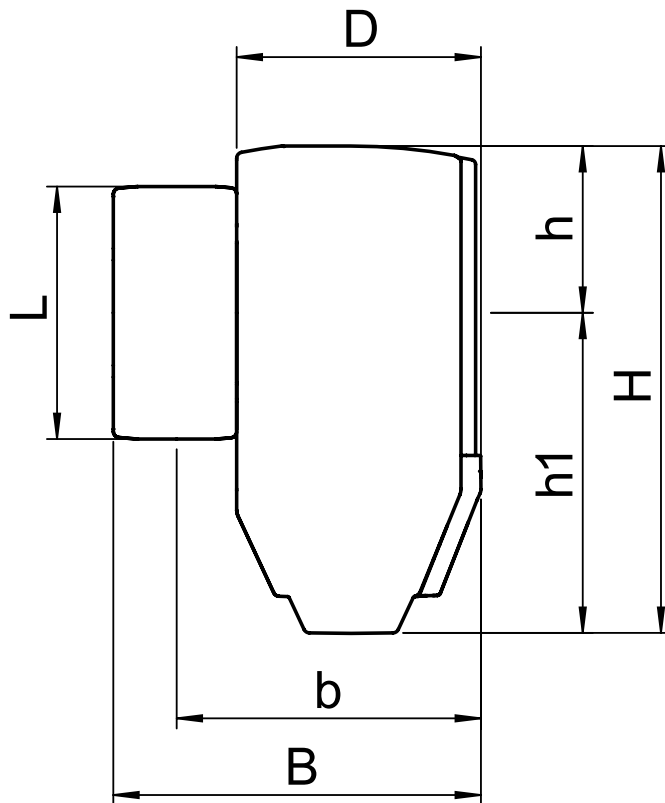
According to E (EN 13501-1): yes

Construction materials

Body: EPP

Color: Black

Drawing



Dimensions

H:	287 mm
h:	98 mm
h1:	189 mm
L:	149 mm
D:	147 mm
B:	217 mm
b:	180 mm

Dry weight (approx) 0.16 kg

Subject to changes