

Panel mounted receptacle

Part no. 2711

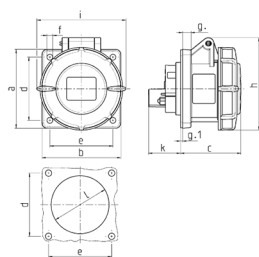


- screw terminals
- highly heat resistant contact carrier
- nickel plated contacts
- straight

Technical specifications

Ampere	16 A
Poles	7 p
Voltage	400 V
Clock position	6 h
Hertz	60-50 Hz
Connection technology	Screw terminals
Contact	nickel plated contacts, highly heat resistant contact carrier
Protection type	IP67
Flange	75x75 mm
Fixing hole	60x60 mm
Weight	217 g

Drawing



Drawing	Amp.	16	32
1 MB 141	Poles	7	7
Dim. in mm	a	75	85
	b	75	75
	c	61	72
	d	60	60
	e	60	60
	f	5.5	5.5
	g	8	8
	g-1	2	2
	h	95	105
	i	96	110
	k	32	39
	l	54	65
Terminal for cond. cross		1.5	2.5
section (mm ²) min.-max.		—4	—10