

FAQ – Solar Panels with W-Modbus

What does our product (W-Modbus) do?

Our products offer a wireless solution between the inverter and the smart meter.

What is needed to operate wirelessly between the inverter and the smart meter?

To set up a wireless connection, you need 2x transformers and one of the following combinations:

2 x DIN Rail W-Modbus

2 x Wallmount W-Modbus

1 x DIN Rail W-Modbus + 1 x Wallmount W-Modbus

What is the difference between DIN Rail W-Modbus and Wallmount W-Modbus?

Both DIN Rail and Wallmount function similarly and are compatible with each other. The DIN Rail can be more conveniently mounted in a DIN Rail cabinet and has a slightly longer range than the Wallmount. Additionally, an external antenna can be attached to the DIN Rail product, extending its range further.

What is the range of LumenRadio's wireless solution?

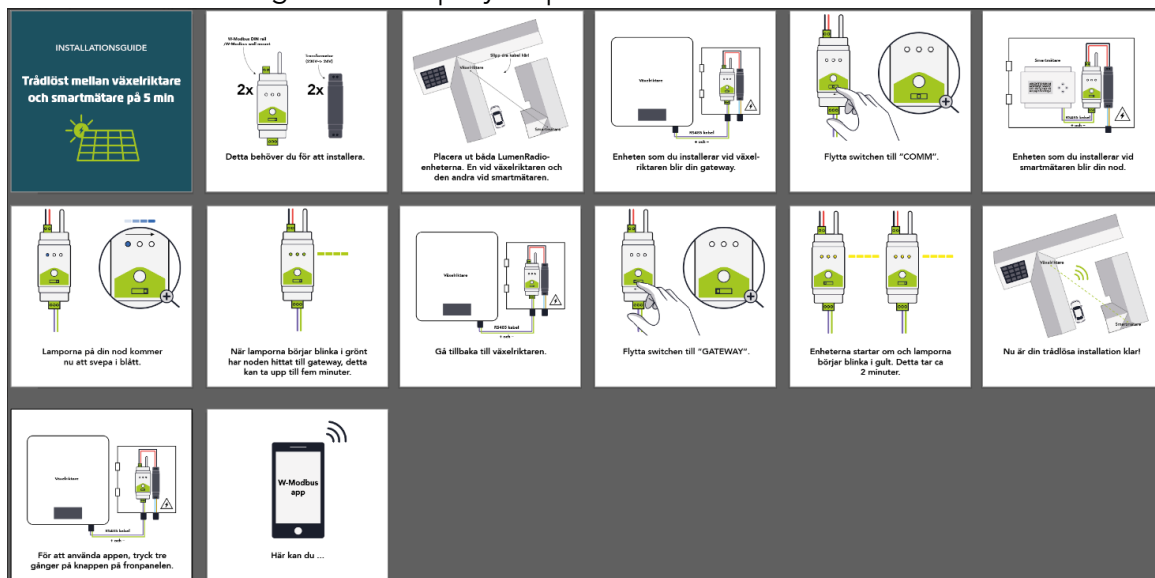
Without obstacles, our products can achieve a range of up to 500 meters. With obstacles such as walls, trees, buildings, etc., the range will be significantly shorter.

Which inverters does our solution support?

Currently, our solution supports inverters from Huawei, Sungrow, and Growatt. There are also many inverters that use Modbus that we have not tested yet.

How do you configure wireless communication between the inverter and the smart meter?

You can configure wireless communication with a simple setup process. Please refer to our detailed installation guide for step-by-step instructions.



<https://www.youtube.com/watch?v=5DKygxhheWA>

https://www.youtube.com/watch?v=UJ3_YVOaMvA&t=221s