

Panel mounted receptacle with TwinCONTACT

Part no. 1351

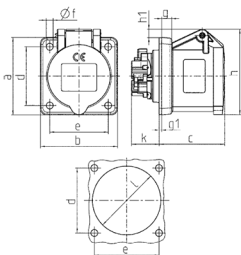


- screwless spring terminals
- suitable for through wiring
- straight

Technical specifications

Ampere	16 A
Poles	3 p
Voltage	400 V
Clock position	9 h
Hertz	50-60 Hz
Connection technology	Screwless - TwinCONTACT
Contact	standard
Protection type	IP44
Flange	62x62 mm
Fixing hole	47x47 mm
Weight	102 g
Certifications	VDE

Drawing



Drawing 1 MB 649	Amp. Poles	16		
		3	4	5
Dim. in mm	a	62	72	72
	b	62	65	65
	c	54	54	54
	d	47	52	52
	e	47	52	52
	f	5,5	5,5	5,5
	g	8	8	8
	g1	2	2	2
	h	68	77	85
	h1	7	7	11
	k	23	23	23
	l	50	52	57
Terminal for cond. cross section (mm ²) min.-max.		1,5 1,5 1,5	—4 —4 —4	—4 —4 —4