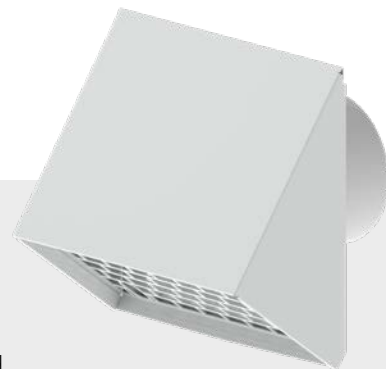


TECHNICAL DATA SHEET

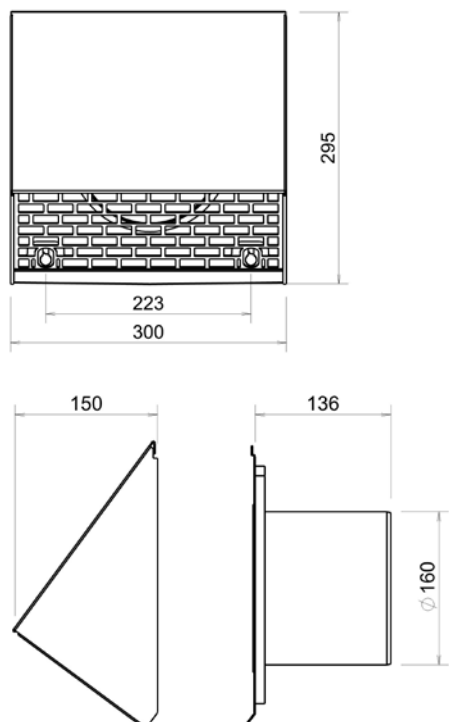
DucoFlex Wall feed-through white/ black D180



The DucoFlex Wall feed-through can be used as a supply and extraction point with very low pressure losses. The fitted flange with a diameter of 160 provides a quick and air-tight connection to the DucoFlex ISO D160 pipes without any need for connecting pieces. The pre-fitted condensation strip prevents possible undesired deposits of dripping condensation water. The sleek design and white or black colour enable the unit to be used discretely in any type of façade.

Physical characteristics

Article number	White: 0000-4585 Black: 0000-4628
Width x Height x Depth (mm)	Total: 300 x 295 x 286
Specific features	<ul style="list-style-type: none"> • Connection diameter (mm): 180 • Transit diameter: depending on the applied supply or extraction pipes • Very low pressure losses (see graphs) • Equipped with pre-mounted drip lip • Scope of application: vertical wall
Material	Powder-coated aluminium
Colour	White (RAL 9016) or Black (RAL 9005)
Packaging	Per piece



Technical features

Range of application	Outlet / inlet
Maximum recommended flow rate	Outlet: 550 m ³ /h Inlet: 370 m ³ /h
Operating temperature (°C)	From -25 to +80

Flow rate (m ³ /h)	Volume flow rate (l/s)	Speed (m/s)	Pressure loss	
			Outlet (Pa)	Inlet (Pa)
92	25	1	0,5	1,6
183	51	2	2,1	6,3
275	76	3	4,7	14,2
366	102	4	8,4	25,3
550	153	6	18,8	56,9

Pressure drop: inlet and outlet

