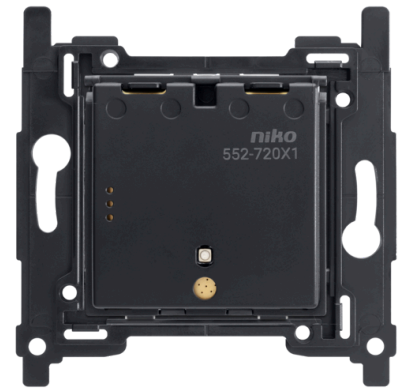


Wireless battery-powered switch, onefold, Zigbee®

552-72001



This onefold wireless battery-powered Zigbee® switch allows you to remotely control wireless Zigbee® devices. It can either be used in your Niko Home Control installation or connected to a third-party Zigbee® network as a standard dimmer switch via Find&Bind pairing. Moreover, the switch can be paired with up to eight Zigbee® receivers for stand-alone use via Touchlink. It is battery-powered with a lifetime of at least five years, based on twenty short-press actuations a day. The wireless Zigbee® switch is mounted on a plastic base. The set (base + switch) can be screwed on a wall (screws excluded) or glued to a flat surface with double-sided adhesive tape (included). If you want to install the onefold wireless battery-powered Zigbee® on a flush-mounting box, order the variant without plastic baseplate (552-72011). Combine it with a metal baseplate (552-720X0) instead. The single key and faceplate must be ordered separately. This onefold wireless battery-powered Zigbee® switch combines with any Niko Pure, Niko Intense and Niko Original faceplate in the colour of your choice. For best performance, follow the installation and radio planning guidelines. The wireless battery-powered switch can be connected wirelessly to the wireless smart hub for Niko Home Control (552-00001). This device can also be used in a bus wiring installation in combination with the wireless bridge for Niko Home Control (550-00640).



Technical data

Wireless battery-powered switch, onefold, Zigbee®.

- Maximum range (from switch to smart hub): 10 m
- Power supply: via battery 3 V DC, CR2450
- Battery lifespan: 5 years at 20 actuations/day
- Antenna: integrated antenna
- Humidity: 0 – 95 % relative humidity, non-condensing
- Maximum per installation:
- Ambient temperature operation: 5 °C – 30 °C
- Ambient temperature storage: 0 °C – 40 °C
- Compatible with the wireless bridge
- Type of control: push button
- Number of buttons: 1
- Number of leds: 0
- Wireless communication protocol: Zigbee® 3.0
- System compatibility: talks with Homey (Zigbee®)
- Protection degree: IP20

- Required type of flush-mounting box:
 - depth: min. 40 mm (cabling space included)
 - claw/screw fixing: 60 mm
 - inner diameter box: 60 mm
 - multiple boxes centre distance horizontal: 71 mm
 - multiple boxes centre distance vertical: 71 mm
 - multiple boxes centre distance vertical: 60 mm for Belgium and France
- Type of fastening: screw fixing or glueing
- Dimensions (HxWxD): 71 mm x 71 mm x 10 mm
- Certification marks: Zigbee Certified Product
- Marking: CE

Dimensions

