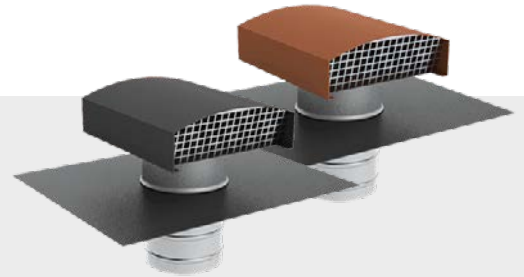


# TECHNICAL DATA SHEET

## DucoFlex Roof feed-through Compact D200 - Slate/Terracotta



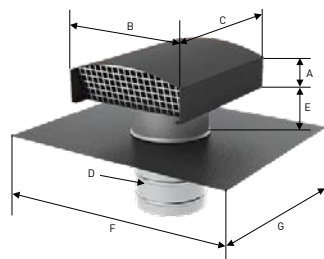
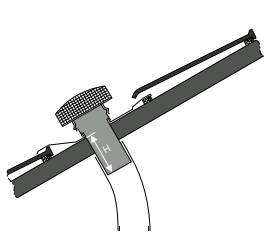
The DucoFlex Roof feed-through Compact D200 can be used as a supply and extraction point. The dark grey resp. terracotta colour and the design allow this unit to be integrated very discretely into a tiled roof. The pre-fitted lead slate ensures quick and water-tight installation. Thanks to its smart design, this compact roof feed-through is hardly sensitive to atmospheric turbulence. The connection piece fits seamlessly onto the DucoFlex ISO D200 pipes.

### Physical characteristics

<b>Article number</b>	Slate: 0000-4920 Terracotta: 0000-4921
<b>Width x Height x Depth (mm)</b>	Total: 590 x 327 x 590 Above the roof: 397 x 187 x 335
<b>Specific features</b>	<ul style="list-style-type: none"> <li>• Very low pressure losses (see graphs)</li> <li>• Transit perpendicular to the roof slope</li> <li>• Pre-assembled lead slate for use in pitched roofs</li> <li>• Application range: Sloping roofs between 5° and 45°</li> </ul>
<b>Connection diameter (mm)</b>	D200
<b>Material</b>	Aluminium / galvanised steel / lead
<b>Colour outside</b>	Dark grey or Terracotta
<b>Packaging</b>	Packaged individually

### Technical features

<b>Range of application</b>	Extraction / Supply
<b>Maximum flow rate</b>	Extraction: 600 m <sup>3</sup> /h Supply: 500 m <sup>3</sup> /h

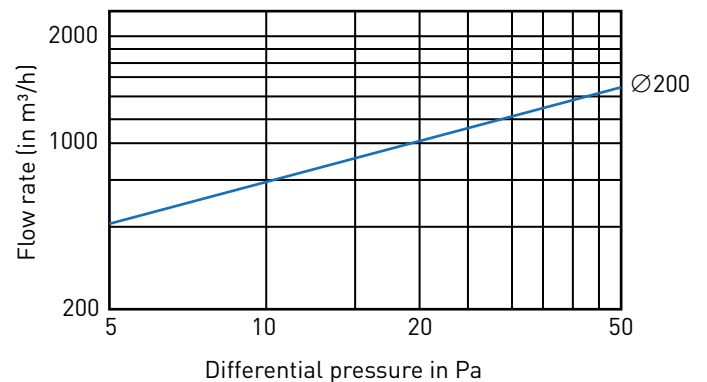


#### Dimensions (mm)

A	B	C	D	E	F	G	H
100	335	397	200	82	590	590	140

\* Slate and Terracotta have the same dimensions

#### EXTRACTION



#### SUPPLY

