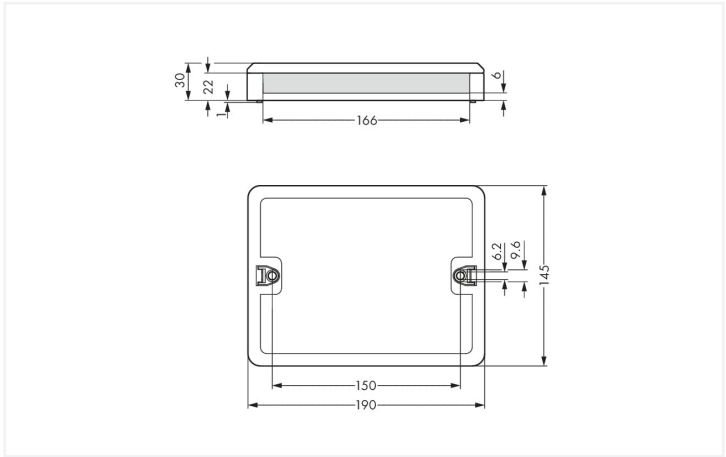




Color: white

Similar to illustration



Dimensions in mm

Empty housings *WINSTA*®

Choose tried-and-tested accuracy for the installation at your construction site: The empty housings from the *WINSTA*® product line. An extensive range of accessories rounds out the *WINSTA*® product line from WAGO.

Push-in CAGE CLAMP® spring pressure connection technology – pluggable installation instead of laborious screw connections!

The *WINSTA*® Pluggable Connection System allows pluggable electrical installation. This saves time, lowers costs, and reduces the need for servicing. Choose quality and durability – the *WINSTA*® distribution box from WAGO makes the installation of electrical components noticeably easier.

- intuitive marking
- products perfectly tailored to your requirements guarantee safe use
- quick replacement of defective units during ongoing operation

Notes		
Note		For easy cable connection, do not arrange the connectors directly next to each other in the distribution box.

Physical data		
Width		190 mm / 7.48 inches
Height		30 mm / 1.181 inches
Depth		145 mm / 5.709 inches

Mechanical data		
Application		Self-Assembly
Mounting type		Wall, screw mount Installation on mounting plate






Material data	
Note (material data)	Information on material specifications can be found here
Color	white
Insulation material	Polyamide (PA66)
Flammability class per UL94	V0
Fire load	5.374 MJ
Weight	192.6 g

Environmental requirements	
Processing temperature	-5 ... +40 °C
Continuous operating temperature	-35 ... +85 °C
Note on continuous operating temperature	Insulating parts for temperatures ≤ 105 °C

Commercial data	
eCl@ss 10.0	27-44-06-03
eCl@ss 9.0	27-44-06-03
ETIM 8.0	EC002567
ETIM 7.0	EC002567
PU (SPU)	1 pcs
Packaging type	Box
Country of origin	DE
GTIN	4055143315715
Customs tariff number	85366990990

Environmental Product Compliance	
RoHS Compliance Status	Compliant,No Exemption

Downloads	
Environmental Product Compliance	
Compliance Search	
Environmental Product Compliance 899-682	

Documentation			
Bid Text			
899-682	19.02.2019	xml 3.09 KB	
899-682	16.03.2015	doc 24.00 KB	

1 Compatible Products

1.1 Optional Accessories

1.1.1 Installation

1.1.1.1 Mounting accessories



Item No.: 770-630
Fixing pin; for distribution boxes; Plastic; gray



Item No.: 890-302
Mounting carrier; 2-pole; for sockets and plugs; Plastic; gray



Item No.: 890-303
Mounting carrier; 3-pole; for sockets and plugs; Plastic; gray



Item No.: 890-304
Mounting carrier; 4-pole; for sockets and plugs; Plastic; gray



Item No.: 890-305
Mounting carrier; 5-pole; for sockets and plugs; Plastic; gray



Item No.: 899-680
Mounting plate; for distribution boxes; gray

Installation Notes

Installation



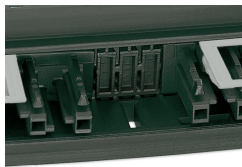
Application



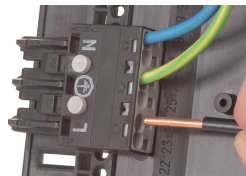
The set includes: 1 bottom, 1 lid, 2 side-walls and 16 mounting pins.



Remove unrequired sections from the side-walls.



Unassigned slots and spaces are closed by inserting a sidewall.



Using mounting pins to secure WINSTA® MIDI connectors in a distribution box .



Using adapters to install WINSTA® MINI connectors in a distribution box