

36 608 361 Product version from 4/1/2025



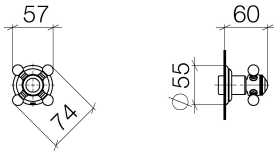
- rosette Ø 55 mm
- head part with cut-to-length spindle and sleeve
- 3x porcelain insert: HOT, COLD and NEUTRAL
- WRAS

	Brushed Durabronz (23kt Gold)	36 608 361-28
	Chrome	36 608 361-00
	Brushed Platinum	36 608 361-06
	Platinum	36 608 361-08
	Durabronz (23kt Gold)	36 608 361-09
	Brushed Gold (PVD)	36 608 361-37
	Brushed Dark Brass (PVD)	36 608 361-39
	Brushed Bronze (PVD)	36 608 361-42
	Brushed Dark Platinum	36 608 361-99

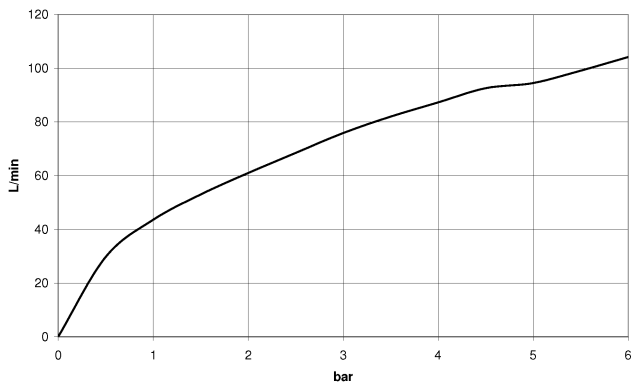
Required miscellaneous



- Wall valve 3/4" -** 35 608 970 90
- min. recess depth 75 mm
 - max. recess depth 145 mm



Flow rate chart



Codes & Standards

ASME A112.18.1

cUPC

Scottish Water
Byelaws

UK Water Supply
Regulations



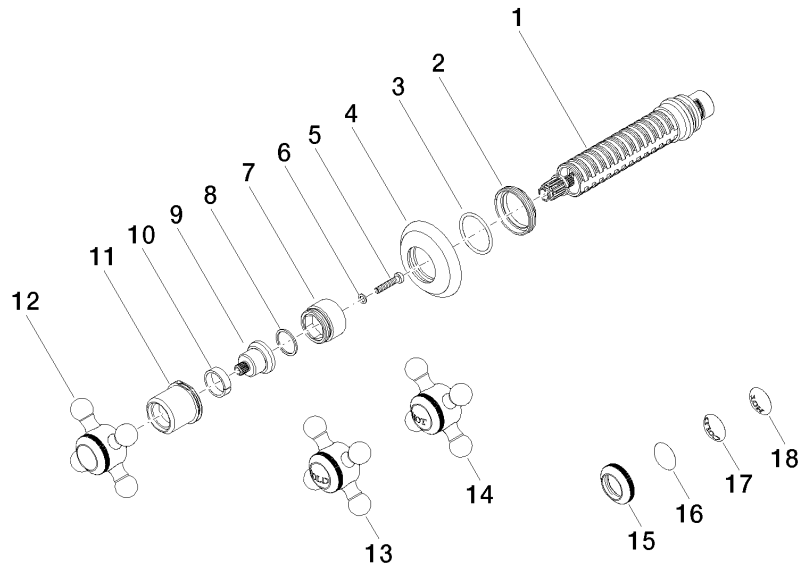
MADISON Wall valve clockwise closing 3/4" - Brushed Durabron (23kt Gold)

MADISON

36 608 361 Product version from 4/1/2025

Certificates and sustainability

WRAS_2010 EPD-DOR-20230287 IAPMO_4976 (
-IBA1-EN
Environmental.prod
uct-declarat



Spare parts list

No.	Item Number	Name	Quantity used	Delivery time
	2 09 23 10 125-00	Mounting Nut Ø 34 x 7,8 mm - Chrome	1.00	20
	5 90 30 30 075 00 90	Mounting Cylinder head screw with hexagon socket Low profile M4 x 20 mm -	1.00	14
	17 09 26 01 010 90	Cover Porcelain insert plate COLD -	1.00	14
	14 04 20 36 100 01-28	Handle Hot 57 x 57 x 34 mm - Brushed Durabrace (23kt Gold)	1.00	40
	6 09 30 11 194 90	Lock washer Type S Ø 7 x 1 mm -	1.00	14
	10 90 14 15 021 00 90	Ring Ø 19,5 x 5,4 mm -	1.00	14
	8 90 28 10 030 00 90	Ring -	1.00	14
	13 04 20 36 100 00-28	Handle Cold 57 x 57 x 34 mm - Brushed Durabrace (23kt Gold)	1.00	40
	18 09 26 01 011 90	Cover Porcelain insert plate HOT -	1.00	14
	1 90 90 03 127 00 90	Head part clockwise closing 3/4" -	1.00	14
	11 09 21 02 161-28	Cover Ø 29 x 26,1 mm - Brushed Durabrace (23kt Gold)	1.00	40
	7 09 18 30 007-28	Sleeve Ø 26 x 18,5 mm - Brushed Durabrace (23kt Gold)	1.00	-
Spare part can no longer be ordered, please order the replacement item				
	12 04 20 36 100 02-28	Handle Neutral 57 x 57 x 34 mm - Brushed Durabrace (23kt Gold)	1.00	40
	16 09 26 01 016 90	Cover Porcelain insert plate NEUTRAL -	1.00	14
	4 09 27 36 102-28	Rosette Ø 55 x 10 mm - Brushed Durabrace (23kt Gold)	1.00	40
	9 09 12 12 064-28	Fixing cap mount Ø 19,4 x 24 mm - Brushed Durabrace (23kt Gold)	1.00	-
Spare part can no longer be ordered, please order the replacement item				
	15 09 20 36 005-28	Handle Ø 28 x 7 mm - Brushed Durabrace (23kt Gold)	1.00	40
	3 90 14 10 063 00 90	O-Ring EPDM 70 26,0 x 2,0 mm -	1.00	14