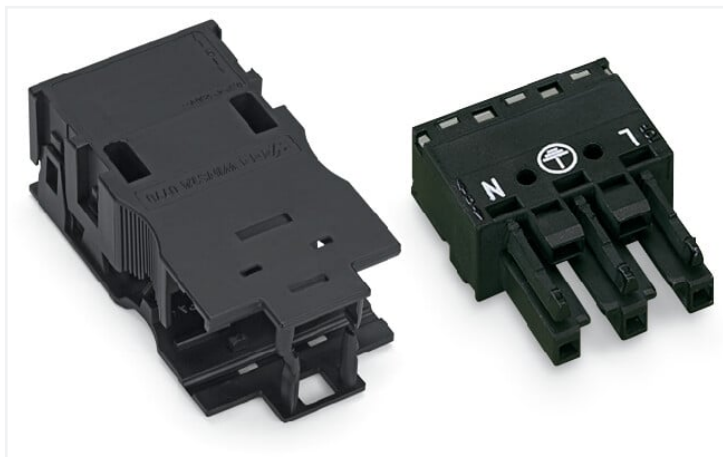


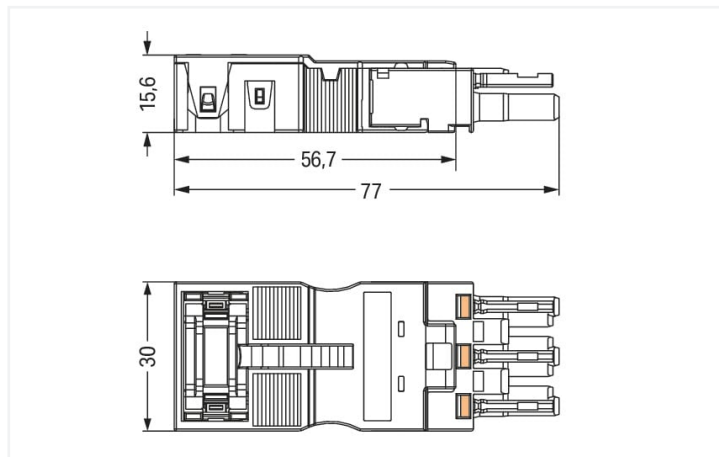
## Data Sheet | Item Number: 770-203/035-000

Socket; with strain relief housing; 3-pole; Cod. A; 4,00 mm<sup>2</sup>; black

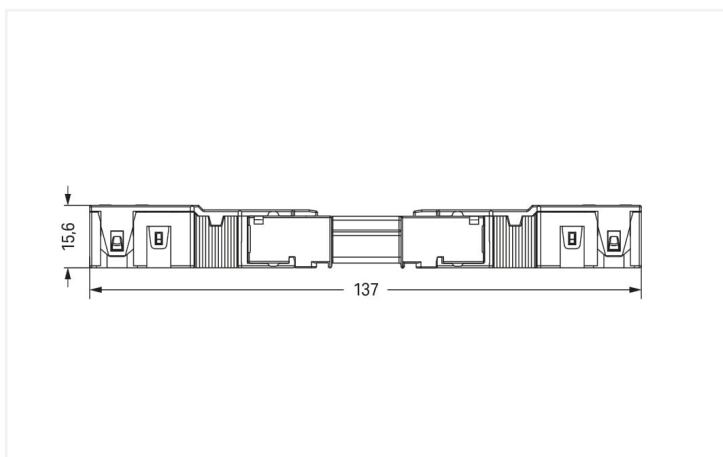
<https://www.wago.com/770-203/035-000>



Color: ■ black



Dimensions in mm



Dimensions in mm

Overall length when mated

### Female connector/socket WINSTA® MIDI with protection against mismatching

The WINSTA® MIDI female connector/socket rated current 25 A is the pluggable solution for your use in control cabinets, for lighting connections or on PCBs. Our pluggable installation connectors with spring pressure connection technology work without screw connections. They allow fast, efficient, error-free installation in a large number of possible uses. For greater protection in electrical installations, the pluggable installation connector is equipped with mechanical protection against mismatching. Thanks to the color coding and mechanical A coding of WINSTA® MIDI pluggable installation connectors, you can clearly distinguish different circuits. This pluggable installation connector is used for electrical currents up to 25 A. Thus the product is also suitable for high power loads. The WINSTA® MIDI Pluggable Connection System with Push-in CAGE CLAMP® spring pressure connection technology facilitates precise electrification. Due to the included test slot, it is possible to check connections even when they are plugged in. This saves time, labor, and money. A range up to 48 mm can be used for the strip length.

Push-in CAGE CLAMP® spring pressure connection technology – pluggable installation instead of laborious screw connections!

WINSTA® is the pluggable connection system that is perfectly tailored to the strict requirements of electrical installation. It offers fast, secure and, above all, error-free installation of components and cables. Enjoy the benefits of the pluggable version of our maintenance-free spring pressure connection technology too! Plan your installation with with protection type IP2XD from WAGO.

- protection against mismatching eliminates errors
- pre-assembled versions
- for any mains application
- custom-engineered solutions
- quick replacement of defective units during ongoing operation

## This item includes:



Item No.: 770-203

1

Item No.: 770-503/035-000

1

Socket; 3-pole; Cod. A; 4,00 mm<sup>2</sup>; black

Strain relief housing; 3-pole; with locking clip; for 1 cable; 7.0 ... 11.5 mm; 48 mm; black

## Electrical data

Ratings per	IEC/EN 60664-1		
Overvoltage category	III	III	II
Pollution degree	3	2	2
Nominal voltage	250 V	-	-
Rated surge voltage	4 kV	-	-
Rated current	25 A	-	-

Approvals per	UL 1977
Rated voltage	600 V
Rated current	23 A

## General information

Note on contact resistance	approx. 1 mΩ of contact resistance approx. 0.25 mΩ contact transition plug/ socket
----------------------------	--

## Connection data

Connection points	6
Total number of potentials	3

Connection 1	
Connection technology	Push-in CAGE CLAMP®
Actuation type	Operating tool Push-in
Nominal cross-section	4 mm <sup>2</sup> / 12 AWG
Solid conductor	0.5 ... 4 mm <sup>2</sup> / 20 ... 12 AWG
Solid conductor; push-in termination	1.5 ... 4 mm <sup>2</sup> / 16 ... 12 AWG
Stranded conductor	0.5 ... 2.5 mm <sup>2</sup> / 20 ... 14 AWG
Fine-stranded conductor	0.5 ... 4 mm <sup>2</sup> / 20 ... 12 AWG
Fine-stranded conductor; with insulated ferrule	0.25 ... 1.5 mm <sup>2</sup> / 20 ... 16 AWG
Fine-stranded conductor; with uninsulated ferrule	0.25 ... 2.5 mm <sup>2</sup> / 20 ... 14 AWG
Fine-stranded conductor; with ferrule; push-in termination	1.5 mm <sup>2</sup> / 16 AWG
Strip length	9 mm / 0.35 inches
Pole number	3
Connectable sheathed cable diameter	7 ... 11.5 mm
Conductor entry direction to mating direction	0°
Strip length (outer insulation)	48 mm

### Physical data

Pin spacing	10 mm / 0.394 inches
Width	30 mm / 1.181 inches
Height	15.6 mm / 0.614 inches
Depth	77 mm / 3.031 inches

### Mechanical data

Application	General mains applications
Coding	A
Variable coding	Yes
Marking	L N
Potential marking	L N
Mating force of a plug-in connection	approx. 20 ... 70 N (depending on pole number)
Retention force of a plug-in connection	Locked: > 80 N
Unmating force of a plug-in connection	Unlocked: approx. 20 ... 70 N (depending on pole number)
Number of mating cycles	200, without resistive load
Protection type	IP2XD; When mated and secured with a strain relief housing: IP2xC (These compact connectors are not designed for use in open, easily accessible areas!)
Suitable	for quick assembly

### Plug-in connection

Contact type (pluggable connector)	Female connector/socket
Connector (connection type)	for conductor
Mismating protection	Yes
Note on mismating protection	All <i>WINSTA</i> ® components are 100% protected against mismating when: a.) plugging different numbers of poles b.) plugging while rotated 180 c.) plugging while laterally staggered d.) plugging one pole
Locking lever	Can be retrofitted
Locking of plug-in connection	Locking lever
Note on locking system	All connectors for mounted installations (snap-in versions for lighting fixtures or devices, all types of PCB and distribution connectors) are factory-equipped with locking levers to ensure plugs and sockets are securely locked. Additional locking levers are only required for flying leads (plug/socket).
Strain relief	Strain relief house, for quick assembly

### Material data

Note (material data)	<a href="https://www.wago.com/us/material-specifications">Information on material specifications can be found here</a>
Color	black
Cover color	gray
Material group	I
Insulation material	Polyamide (PA66)
Flammability class per UL94	V0
Clamping spring material	Chrome-nickel spring steel (CrNi)
Contact material	Copper or copper alloy; surface-treated
Contact plating	Tin
Fire load	0.419 MJ
Strain relief color	black
Weight	17.6 g

**Environmental requirements**

Processing temperature	-5 ... +40 °C
Continuous operating temperature	-35 ... +85 °C
Note on continuous operating temperature	Insulating parts for temperatures ≤ 105 °C

**Commercial data**

eCl@ss 10.0	27-44-06-05
eCl@ss 9.0	27-44-06-05
ETIM 8.0	EC002560
ETIM 7.0	EC002560
PU (SPU)	25 pcs
Packaging type	Box
Country of origin	DE
GTIN	4055143209168
Customs tariff number	85366990990

**Environmental Product Compliance**

RoHS Compliance Status	Compliant, No Exemption
------------------------	-------------------------

**Approvals / Certificates**

**General approvals** **Approvals for marine applications**



Approval	Standard	Certificate Name
cURus Underwriters Laboratories Inc.	UL 1059	E 45172



Approval	Standard	Certificate Name
LR Lloyds Register	IEC 61984	LR22429487TA

**Downloads**

**Environmental Product Compliance**

Compliance Search
Environmental Product Compliance 770-203/035-000 <a href="#">↓</a>

**Documentation**

Bid Text			
770-203/035-000	19.02.2019	xml 3.05 KB	<a href="#">↓</a>
770-203/035-000	08.06.2015	doc 23.50 KB	<a href="#">↓</a>
ausschreiben.de 770-203/035-000			<a href="#">↓</a>

CAD/CAE-Data

CAD data

2D/3D Models  
770-203/035-000



1 Compatible Products

1.1 System counterpart

1.1.1 Cable assembly



**Item No.: 771-9993/206-101**

pre-assembled connecting cable; Eca; Plug/open-ended; 3-pole; Cod. A; H05VV-F 3G 1.5 mm<sup>2</sup>; 1 m; 1,50 mm<sup>2</sup>; black

**Item No.: 771-9993/006-101**

pre-assembled interconnecting cable; Eca; Socket/plug; 3-pole; Cod. A; H05VV-F 3G 1.5 mm<sup>2</sup>; 1 m; 1,50 mm<sup>2</sup>; black

1.1.2 Distribution box



**Item No.: 899-631/181-000**

Distribution box; 230 V + DALI; 2 inputs; 6 outputs; Cod. A, I; MINI, MIDI; black



**Item No.: 899-631/405-000**

Distribution box; 230 V + SMI; 2 inputs; 6 outputs; Cod. A, B; MINI, MIDI; black



**Item No.: 899-631/315-000**

Distribution box; Cable and device protection; 1 input; 4 outputs; Cod. A; MIDI; black



**Item No.: 899-631/305-000**

Distribution box; Crossover switching; 1 input; 5 outputs; Cod. A, B, S; MIDI; black



**Item No.: 899-631/309-000**

Distribution box; Motion/presence detector; 1 input; 3 outputs; Cod. A, S; MIDI; black



**Item No.: 899-631/180-000**

Distribution box; Motion/presence detector; 1 input; 5 outputs; Cod. A; MIDI; black



**Item No.: 899-631/386-000**

Distribution box; Series switching; 1 input; 7 outputs; Cod. A, S; MIDI; black



**Item No.: 899-631/334-000**

Distribution box; Single-phase current (230 V); 1 input; 13 outputs; Cod. A; MIDI; black



**Item No.: 899-631/476-000**

Distribution box; Single-phase current (230 V); 1 input; 4 outputs; Cod. A; MIDI; black



**Item No.: 899-631/104-000**

Distribution box; Single-phase current (230 V); 1 input; 7 outputs; Cod. A; MIDI; black



**Item No.: 899-631/311-000**

Distribution box; Single-phase current (230 V); 2 inputs; 6 outputs; Cod. A, P; MIDI; black



**Item No.: 899-631/327-000**

Distribution box; Single-phase current (230 V); 2 inputs; 6 outputs; Cod. A; MIDI; black



**Item No.: 899-631/363-000**

Distribution box; Single-pole switch circuit; 1 input; 5 outputs; Cod. A, S; MIDI; black



**Item No.: 899-632/101-000**

Distribution box; Surge switch circuit; 1 input; 4 outputs; Cod. A, S; MIDI; black



**Item No.: 899-632/138-000**

Distribution box; Surge switch circuit; 1 input; 4 outputs; Cod. A, S; MIDI; black



**Item No.: 899-631/308-000**

Distribution box; Two-way circuit; 1 input; 5 outputs; Cod. A, S; MIDI; black



**Item No.: 899-631/189-000**

Distribution box; Two-way circuit; 1 input; 7 outputs; Cod. A, S; MIDI; black

1.1.3 Distribution connector



**Item No.: 770-607**

3-way distribution connector; 3-pole; Cod. A; 1 input; 3 outputs; black



**Item No.: 770-608**

5-way distribution connector; 3-pole; Cod. A; 1 input; 5 outputs; outputs on both sides; black



**Item No.: 770-638**

Distribution connector for switches; Single-pole and throttle two-way circuit; 3-pole; Cod. A/S; 1 input; 5 outputs; black



**Item No.: 770-637**

Distribution connector for switches; Single-pole switch and series circuit; 3-pole; Cod. A/S; 1 input; 5 outputs; black



**Item No.: 770-633**

h-distribution connector; 3-pole; Cod. A; 1 input; 2 outputs; 2 locking levers; black



**Item No.: 770-635**

h-distribution connector; 3-pole; Cod. A; 1 input; 2 outputs; outputs on both sides; 3 locking levers; for flying leads; black



**Item No.: 770-634**

h-distribution connector; 3-pole; Cod. A; 1 input; 2 outputs; outputs on one side; 2 locking levers; black



**Item No.: 770-636**

h-distribution connector; 3-pole; Cod. A; 1 input; 2 outputs; outputs on one side; 3 locking levers; for flying leads; black

### 1.1.3 Distribution connector



**Item No.: 770-606**

T-distribution connector; 3-pole; Cod. A; 1 input; 2 outputs; 2 locking levers; black



**Item No.: 770-615**

T-distribution connector; 3-pole; Cod. A; 1 input; 2 outputs; 3 locking levers; for flying leads; black

### 1.1.4 Male connector/plug



**Item No.: 770-813/011-000**

Plug for PCBs; angled; 3-pole; Cod. A; black



**Item No.: 770-813**

Plug for PCBs; straight; 3-pole; Cod. A; black



**Item No.: 770-213**

Plug; 3-pole; Cod. A; 4,00 mm<sup>2</sup>; black



**Item No.: 770-213/002-000**

Plug; with direct ground contact; 3-pole; Cod. A; 4,00 mm<sup>2</sup>; black



**Item No.: 770-113**

Plug; with strain relief housing; 3-pole; Cod. A; 4,00 mm<sup>2</sup>; black



**Item No.: 770-213/035-000**

Plug; with strain relief housing; 3-pole; Cod. A; 4,00 mm<sup>2</sup>; black



**Item No.: 770-713**

Snap-in plug; 3-pole; Cod. A; 4,00 mm<sup>2</sup>; black



**Item No.: 770-713/007-000**

Snap-in plug; with direct ground contact; 3-pole; Cod. A; 4,00 mm<sup>2</sup>; black

## 1.2 Required Accessories

### 1.2.1 Locking system

#### 1.2.1.1 Locking system



**Item No.: 770-101**

Locking lever; for flying leads; for manual operation; black



**Item No.: 770-121**

Locking lever; for flying leads; for manual operation; white



**Item No.: 770-111**

Locking lever; for flying leads; for tool operation; black



**Item No.: 770-131**

Locking lever; for flying leads; for tool operation; white

## 1.3 Optional Accessories

### 1.3.1 Cover

#### 1.3.1.1 Cover



**Item No.: 770-201**

Lockout cap; 12-pole, separable; for sockets; Plastic; black



**Item No.: 770-221**

Lockout cap; 12-pole, separable; for sockets; Plastic; white

### 1.3.2 Marking

#### 1.3.2.1 Marker



**Item No.: 770-450/000-006**

Marker card; Plastic; blue



**Item No.: 770-450/000-001**

Marker card; Plastic; green



**Item No.: 770-450/000-012**

Marker card; Plastic; orange



**Item No.: 770-450/000-005**

Marker card; Plastic; red



**Item No.: 770-450**

Marker card; Plastic; white



**Item No.: 770-450/000-002**

Marker card; Plastic; yellow

### 1.3.3 Shield termination

#### 1.3.3.1 Shield termination



Item No.: 770-523

Shield connecting plate; 3-pole; for sockets and plugs; silver-colored

### 1.3.4 Tool

#### 1.3.4.1 Operating tool



Item No.: 770-383

Operating tool; 3-way; green



Item No.: 210-719

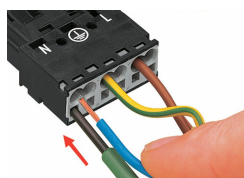
Operating tool; Blade: 2.5 x 0.4 mm; with a partially insulated shaft

## Installation Notes

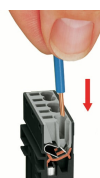
### Conductor termination



1. Strip length, outer insulation = 35 mm (2-pole), 55 mm (3- to 5-pole)
2. Strip length = 9 mm
3. Extended ground conductor = 8 mm



To terminate fine-stranded conductors, open the clamping unit via screwdriver (2.5 mm blade width) and insert a stripped conductor until it hits the backstop.

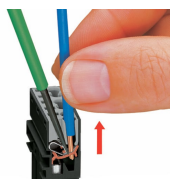


Insert the stripped solid conductor until it hits the backstop.



To terminate fine-stranded conductors, open the clamping unit via screwdriver (2.5 mm blade width) and insert a stripped conductor until it hits the backstop.

### Conductor removal



To remove the conductor, actuate the clamp via screwdriver (2.5 mm blade width) and pull out the conductor.

### Coding

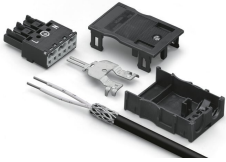


Simply cut off the coding pin from the socket.



Insert coding pin into plug (break first) until it engages.

Shield termination



Connector with shield termination

Apply the shield to the sheathed cable.

Strip length, outer insulation = 55 mm

Shield length = 10 mm

Push the shield connecting plate into the connector until fully inserted.

First insert the wired connector into a strain relief housing, then snap cover and tighten screw.