

# Product data sheet Spirotech

## Product name

**SpiroTrap HPF -28mm -Magnet -Filter -Uni**

## Article number

**UE028XJF**

## Product properties

Available from February 2026!

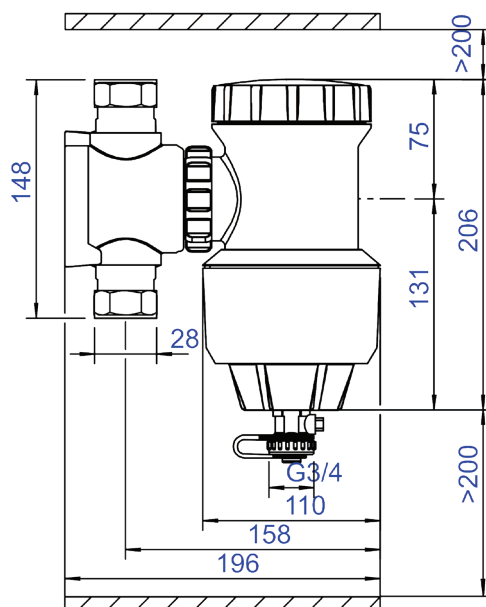
A brass heat pump filter with magnet and a 22 mm - 1¼" universal connection

- Specially developed for heat pumps: optimally tailored to protect sensitive components
- Combination of three components: 160 µm filter, Spiro tube and powerful magnet
- Targeted dirt removal: captures both magnetic and non-magnetic dirt that can cause damage
- Bypass-free design: all system water flows through the filter, dirt cannot bypass it
- Maintenance via backflush mode: quick, clean and without dismantling or tools
- Fits within the standard maintenance interval of the heat pump: on average once every two years
- Intuitive MultiMode Swivel: with clear positions for operation, shut-off and flushing
- Easy to install: available in various connection sizes
- Robust brass housing: resistant to pressure and temperature changes
- 10-year warranty: long-term security for installer and end user

## Product image



## Product dimensions



# Product data sheet Spirotech

## ETIM product data

Housing material	Brass	Suitable for closed system	Yes
With drain valve	Yes	Suitable for solar	No
Housing material quality	Ms 58	Whirl operating principle	No
Backwash filter	Yes	Negative pressure operating principle	No
Min. pressure for back flush	1 bar	With dismountable filter	Yes
Medium temperature (continuous)	0 - 75 °C	Filter volume	0.8 l
Max. operating pressure	6 bar	Magnet operating principle	Yes
KVS value [m <sup>3</sup> /h] at ΔP 1 bar	12	Thrust operating principle	No
Variable flow direction	No	Filter mesh density	0.16 mm
With insulation	No	With automatic de-aerator	No
Separator type	Dirt	Partial flow principle	No
Connection	Compression ring	Principle full flow with settling	Yes
Model	Horizontal/vertical	With integrated replenishment automat	No
Nominal diameter	Other	With couplers	Yes
Max. glycol mixture	50 %	Cleaning possible during operation	Yes
Suitable for heating	Yes	Material of connection	Brass
Suitable for cooling	No	Inlet/outlet offset distance	0 mm
Outer pipe diameter	28 mm	Material quality connection	Other
Article compression class	PN 10	Flow-through capacity	0 - 2 m <sup>3</sup> /h
Surface protection	Untreated	Operating principle	Magnet
Suitable for open system	Yes	Magnet location	External

### Disclaimer

This product sheet has been compiled with the greatest possible care. Nevertheless, it may contain errors or omissions. For the most current and correct information we refer you to our website

