

950-088 45W 3000K specific configuration

Tri-proof lightbar | 1560mm | IP65 | 35/45/55/60W | 3-CCT

## Introduction

### Purpose of this Document

This document provides information for 950-088 45W 3000K. During measurement, the product is used in a different mode where output power, colour temperature and/or beam angle are changed from factory standard. These adjustments can be made without altering the product and are designed to be set by the installer. In most cases, the options are set through switches on the product.

### Results

Total input power	42.3 W
Correlated Colour Temperature	3110 K
Total lumen output	5880 lm
Efficiency	139 lm/W

## Electrical measurement details

### Input Power

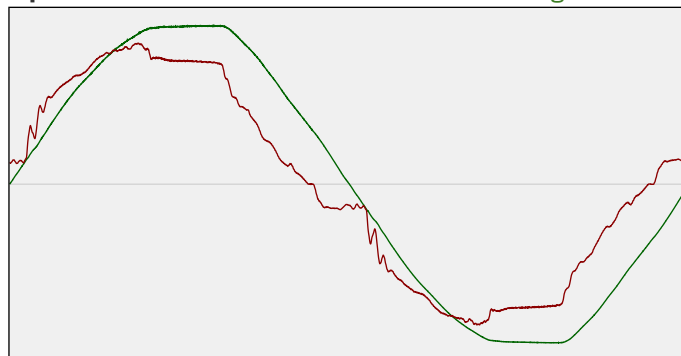
RMS Input voltage feed. $V_{RMS}$	230 V
RMS Input current feed. $I_{RMS}$	0.195 A
Total input power	42.3 W

Frequency of input power	50 Hz
Power factor	0.94
Displacement power factor	0.95

Total harmonic distortion of the current	11.19%
Total harmonic distortion of the voltage	2.55%

### Input Power Curve

Voltage - Current



### Efficiency

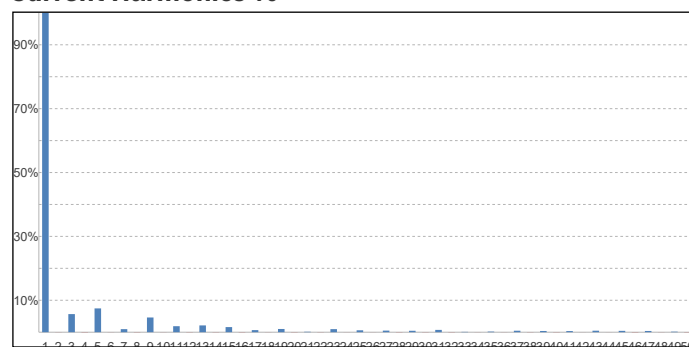
Radiated power efficiency: 41.2%

Lumen efficiency: 139 lm/W

### Harmonics

3rd Harmonic	5.67%
5th Harmonic	7.45%
7th Harmonic	0.96%
9th Harmonic	4.61%
11th Harmonic	1.88%

### Current Harmonics %



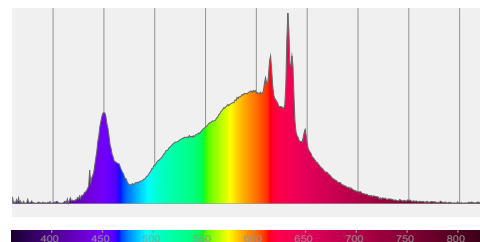
## 950-088 45W 3000K specific configuration

### Colour measurement details

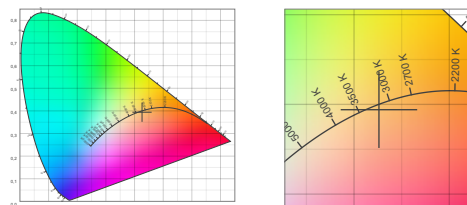
Total lumen output 5880 lm  
 Correlated Colour Temperature 3110 K  
 Colour coordinates CIE 1931 (x;y) = (0.426;0.394)  
 Colour deviation from BBL Duv = -0.0025

TM30-18 Colour Fidelity Index  $R_f$  84.3  
 TM30-18 Colour Gamut Index  $R_g$  99.0  
 Colour Rendering Index (Ra) CRI 84.5  
 Colour Rendering Index. (red component)  $R_9 = 19.3$

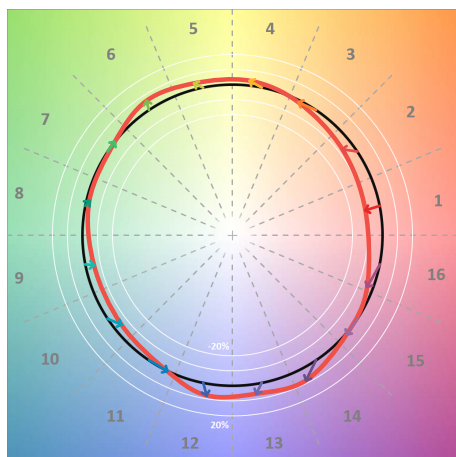
Colour Quality Scale CQS = 82.1  
 Television Lighting Consistency Index TLCI = 70



Relative spectral power distribution



### TM30 details

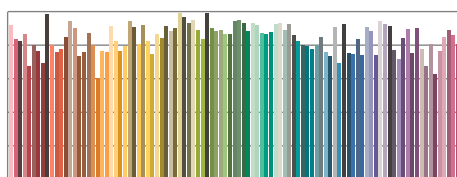


TM30 Colour vectors per hue bin

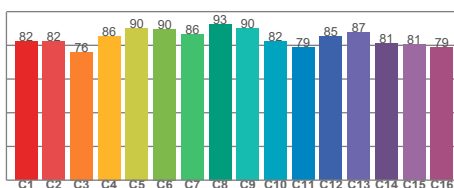


TM30 Colour distortion

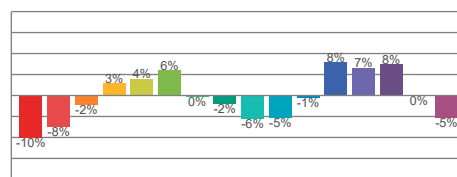
Hue Bin	$R_f$	Shifts (%)	
		Chroma	Hue
C1	82	-10%	-1%
C2	82	-8%	7%
C3	76	-2%	12%
C4	86	3%	9%
C5	90	4%	5%
C6	90	6%	-2%
C7	86	0%	-8%
C8	93	-2%	-4%
C9	90	-6%	2%
C10	82	-5%	9%
C11	79	-1%	14%
C12	85	8%	4%
C13	87	7%	-5%
C14	81	8%	-13%
C15	81	0%	-13%
C16	79	-5%	-16%



TM30-18  $R_f$ -values per reference colour

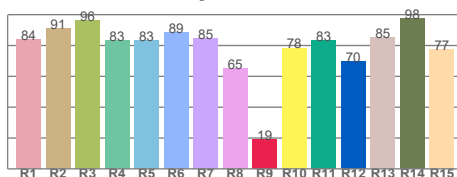


TM30-18  $R_f$ -values per hue bin

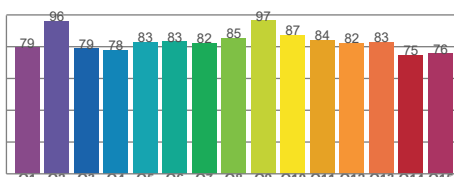


TM30 Chroma shift

### Colour Quality details



Colour Rendering Index



Colour Quality Scale