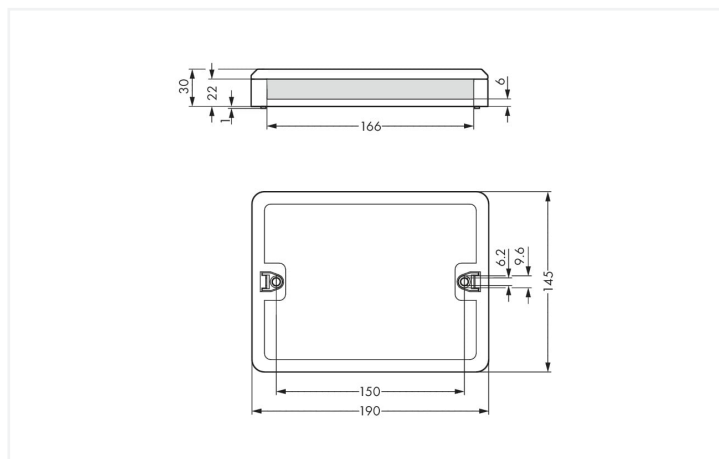
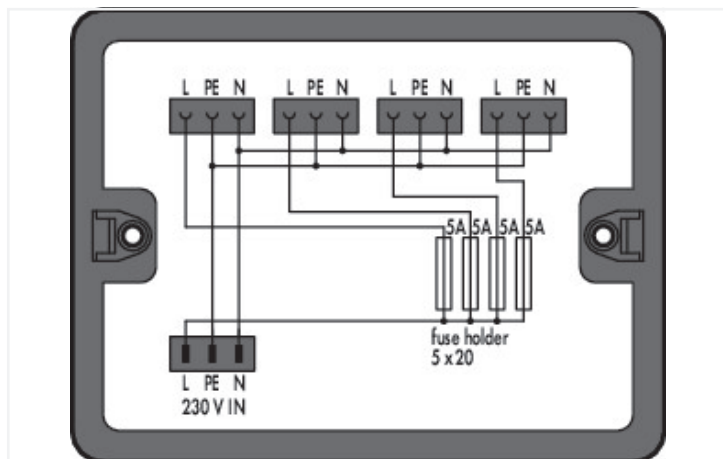


Data Sheet | Item Number: 899-631/315-000

Distribution box; Cable and device protection; 1 input; 4 outputs; Cod. A; MIDI; black

<https://www.wago.com/899-631/315-000>



Color: ■ black

Dimensions in mm

Distribution box WINSTA® rated current 5 A

With the distribution box from the WINSTA® product line with A coding, error-free installation is guaranteed. A comprehensive range of accessories complements the WINSTA® product line from WAGO. The coding options reduce installation errors, allowing fast, maintenance-free wiring of all components. The distribution box is protected against ingress by solid objects in accordance with protection type IP20 (When mated: IP2xC (These compact connectors are not designed for use in open, easily accessible areas!)). The WINSTA® distribution box with A coding in white or black is normally used for general mains applications in power distribution.

WINSTA® solutions for your electrical installation – protected against mismatching and maintenance-free

The WINSTA® Pluggable Connection System is perfectly tailored to the very strict requirements of building installation. It makes electrical installation pluggable, and thus more efficient, even more reliable, and error-free. Use of this pre-assembled system decreases time spent on assembly and installation errors at the construction site. Choose durability and quality – with protection against mismatching from WAGO makes the electrical installation of electrical components substantially easier.

- effective protection against mismatching
- clear slot identification for easy commissioning
- saves time, since no wiring is required at the construction site
- suitable for any application
- rapid, structured electrical installation

Electrical data

| Ratings per | IEC/EN 60664-1 | | |
|----------------------|----------------|-----|----|
| Overvoltage category | III | III | II |
| Pollution degree | 3 | 2 | 2 |
| Nominal voltage | 250 V | - | - |
| Rated surge voltage | 4 kV | - | - |
| Rated current | 5 A | - | - |

General information

| | |
|----------------------------|---|
| Note on contact resistance | approx. 1 mΩ contact resistance approx. 0.25 mΩ contact transition (plug/ socket) |
|----------------------------|---|

Physical data

| | |
|--------|-----------------------|
| Width | 190 mm / 7.48 inches |
| Height | 30 mm / 1.181 inches |
| Depth | 145 mm / 5.709 inches |

Mechanical data

| | |
|-----------------|---|
| Internal wiring | 2.5 mm ² |
| Application | Cable and Device Protection |
| Coding | A |
| Mounting type | Wall, screw mount Installation on mounting plate |
| Protection type | IP20; When mated: IP2xC (These compact connectors are not designed for use in open, easily accessible areas!) |

Plug-in connection

| | |
|--------------------------------|---|
| Mismatching protection | Yes |
| Note on mismatching protection | All <i>WINSTA</i> ® components are 100% protected against mismatching when: a.) plugging different numbers of poles b.) plugging while rotated 180 c.) plugging while laterally staggered d.) plugging one pole |
| Locking of plug-in connection | Locking lever |

Material data

| | |
|-----------------------------|--|
| Note (material data) | Information on material specifications can be found here |
| Color | black |
| Insulation material | Polyamide (PA66) |
| Flammability class per UL94 | V0 |
| Contact material | Copper or copper alloy; surface-treated |
| Contact plating | Tin |
| Fire load | 6.944 MJ |
| Weight | 389.7 g |

Environmental requirements

| | |
|--|--|
| Processing temperature | -5 ... +40 °C |
| Continuous operating temperature | -35 ... +85 °C |
| Note on continuous operating temperature | Insulating parts for temperatures ≤ 105 °C |

Commercial data

| | |
|-----------------------|---------------|
| eCl@ss 10.0 | 27-44-06-03 |
| eCl@ss 9.0 | 27-44-06-03 |
| ETIM 8.0 | EC002567 |
| ETIM 7.0 | EC002567 |
| PU (SPU) | 1 pcs |
| Packaging type | Box |
| Country of origin | DE |
| GTIN | 4055143308366 |
| Customs tariff number | 85366990990 |

Environmental Product Compliance

| | |
|------------------------|-------------------------|
| RoHS Compliance Status | Compliant, No Exemption |
|------------------------|-------------------------|

Downloads

Environmental Product Compliance

| | |
|---|---|
| Compliance Search | |
| Environmental Product Compliance 899-631/315-000 | ↓ |

Documentation

| | | | |
|-----------------|------------|-----------------|---|
| Bid Text | | | |
| 899-631/315-000 | 19.02.2019 | xml 3.47 KB | ↓ |
| 899-631/315-000 | 11.03.2015 | doc 25.50 KB | ↓ |

1 Compatible Products

1.1 System counterpart

1.1.1 Cable assembly



Item No.: 771-9993/206-101
pre-assembled connecting cable; Eca; Plug/open-ended; 3-pole; Cod. A; H05VV-F 3G 1.5 mm²; 1 m; 1,50 mm²; black



Item No.: 771-9993/106-101
pre-assembled connecting cable; Eca; Socket/open-ended; 3-pole; Cod. A; H05VV-F 3G 1.5 mm²; 1 m; 1,50 mm²; black



Item No.: 771-9993/006-101
pre-assembled interconnecting cable; Eca; Socket/plug; 3-pole; Cod. A; H05VV-F 3G 1.5 mm²; 1 m; 1,50 mm²; black

1.1.2 Female connector/socket



Item No.: 770-203
Socket; 3-pole; Cod. A; 4,00 mm²; black



Item No.: 770-103
Socket; with strain relief housing; 3-pole; Cod. A; 4,00 mm²; black



Item No.: 770-203/035-000
Socket; with strain relief housing; 3-pole; Cod. A; 4,00 mm²; black

1.1.3 Male connector/plug



Item No.: 770-213
Plug; 3-pole; Cod. A; 4,00 mm²; black



Item No.: 770-113
Plug; with strain relief housing; 3-pole; Cod. A; 4,00 mm²; black



Item No.: 770-213/035-000
Plug; with strain relief housing; 3-pole; Cod. A; 4,00 mm²; black

1.2 Optional Accessories

1.2.1 Installation

1.2.1.1 Mounting accessories



Item No.: [899-680](#)

Mounting plate; for distribution boxes; gray

Installation Notes

Installation

