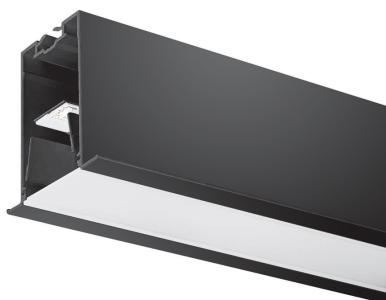


Concord

MC2 TRIM 1.2M 3K DALI BLK OPAL 2071588



Features

- MC2 TRIM 1.2M 3K DALI BLK OPAL LED luminaire, black RAL9005 finishing, direct distribution, trim detail for plasterboard ceilings, suitable for recessed installation either horizontally or vertically, various accessories available, compact and minimalist design based on the Golden Mean, ideal for offices, meeting rooms, corridors, education facilities, museums and libraries, extruded aluminium body, diffuser: opal, colour temperature: 3000K warm white, total system power: 18W, total fixture output: 2300lm, luminaire efficacy: 128lm/W, LOR: 100%, colour rendering: Ra >80, LED Chromacity: 3 step MacAdam ellipse, lifespan: 66,000 hours L90B10, IR/UV free light source without heat radiation, operating voltage: 220-240V / 50-60Hz, drive current: 800mA, electronic driver, DALI dimmable, electrical protection: CLASS I, IP20, suitable for internal environment only.

Product Overview

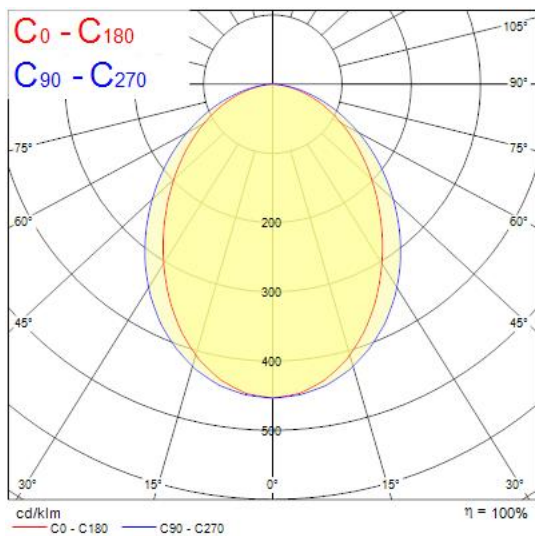
| | |
|----------------------------|--|
| Product name | MC2 TRIM 1.2M 3K DALI BLK OPAL |
| Technology | LED (3 SDCM) |
| Cap/Base | N/A |
| Housing | Aluminium |
| Mount | Ceiling recessed mounting |
| General application | Education, Hospitality, Office, Retail |
| ETIM Class | EC002892 |
| E-number FI | 4170355 |
| Fixture luminous flux (lm) | 2300 |
| Luminaire efficacy (lm/W) | 128 |
| LOR (%) | 100 |
| Colour temperature (K) | 3000 |
| Light colour | Warm White |

Concord

MC2 TRIM 1.2M 3K DALI BLK OPAL 2071588

| | |
|---------------------------------|--------------------|
| CRI (Ra) | 80 |
| Colour Variation Initial (SDCM) | 3 |
| Glare control | < 24 |
| Photobiological Risk Group | RG0 |
| Total power consumption (W) | 18 |
| Electrical protection | Class I |
| Control gear type | Electronic ballast |
| Dimmable | Yes |
| Minimum dimming level (%) | 1 |
| Housing colour | Black |
| IP rating | IP20 |
| IK rating | IK03 |
| Product EAN number | 5025768715886 |
| Warranty | 5 years |
| Useful luminous flux (#use) | 2300 |
| Dimming method | DALI |

Photometry



Technical drawings

