

## PRODUCT DATASHEET

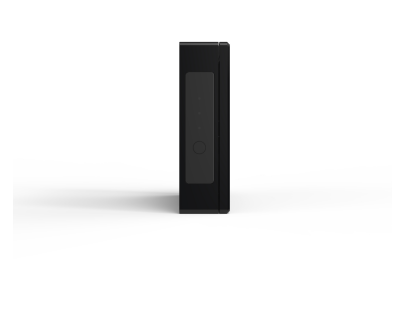
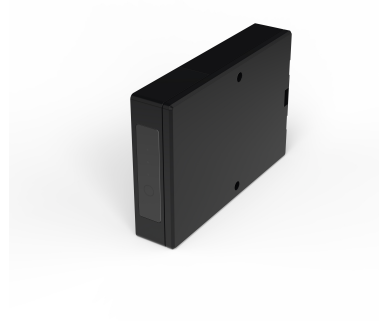
**Type:** ET-SMARTBOX-B  
**Art. Nr.:** 46405



9120129931977

**Short description**

Wireless receiver in conjunction with SMARTCUBE wireless thermostat, b

**Product Description**

The ETHERMA SMARTBOX is an intelligent, wired radio receiver for convenient control of all electric heating appliances. As a central component of the ETHERMA SMART SYSTEM, it is mounted directly on the heater and impresses with its easy-to-install surface-mounted design and generous connection area for simple installation. Thanks to WLAN (2.4 GHz) and control via the ETHERMA SMARTCUBE and the SMART app, the system enables precise temperature control, time programming and individual settings - conveniently from anywhere. Two cable entry options facilitate adaptation to local conditions. The cloud connection is data protection-compliant via servers in Germany. With 230 V supply voltage, a switching current of 8A and IP44 protection, the SMARTBOX is ideally equipped for modern, energy-efficient heating comfort. Available in white or black.

**ETIM 10 Characteristics**

<b>Suitable for dimmer</b>	×	<b>Power consumption</b>	1840 Watt
<b>Suitable for pulse button</b>	×	<b>Number of relays</b>	1
<b>Suitable for roller shutter switch</b>	×	<b>RAL-number (similar)</b>	9005
<b>Suitable for venetian shutter switch</b>	×	<b>Radio frequency</b>	2400 Megahertz
<b>Suitable for venetian-/roller shutter switch</b>	×	<b>Code length (Bit)</b>	0
<b>Suitable for switch</b>	✓	<b>Number of commands</b>	0
<b>In housing</b>	✓		
<b>In tube base housing</b>	✓		
<b>Printed circuit board/module</b>	✓		
<b>Current supply</b>	230 V AC		
<b>Push button mode</b>	×		
<b>Switching mode</b>	✓		
<b>With manual radio transmitter</b>	×		
<b>With radio coding device</b>	×		
<b>With radio controlled push button</b>	×		
<b>Mounting method</b>	Surface mounted		
<b>Material</b>	Plastic		
<b>Material quality</b>	Thermoplastic		
<b>Halogen free</b>	✓		
<b>Surface protection</b>	Untreated		
<b>Surface finishing</b>	Matt		
<b>Type of fastening</b>	Mounting with screw		
<b>Colour</b>	Black		
<b>Transparent</b>	×		

Created on: 16/12/2025

<b>Suitable for degree of protection (IP)</b>	IP30
<b>Degree of protection (NEMA)</b>	Other
<b>Modulation</b>	FM
<b>Rolling code system</b>	×
<b>Compatible with Apple HomeKit</b>	×
<b>Compatible with Google Assistant</b>	×
<b>Compatible with Amazon Alexa</b>	×
<b>IFTTT support available</b>	×