

**VAIA Bath spout for wall mounting - Brushed Dark Platinum**

VAIA

13 801 809 Product version from 3/13/2017



- 200mm projection
- circular normal flow
- hole diameter 37 mm
- rosette Ø 60 mm
- 1/2" connection
- max. flow 21.5 l/min at 3 bar flow pressure
- WRAS

	Brushed Dark Platinum	13 801 809-99
	Chrome	13 801 809-00
	Brushed Platinum	13 801 809-06
	Platinum	13 801 809-08
	Dark Chrome	13 801 809-19
	Brushed Durabronze (23kt Gold)	13 801 809-28
	Brushed Dark Brass (PVD)	13 801 809-39
	Brushed Bronze (PVD)	13 801 809-42
	Brushed Dark Bronze (PVD)	13 801 809-43
	Brushed Champagne (22kt Gold)	13 801 809-46
	Champagne (22kt Gold)	13 801 809-47

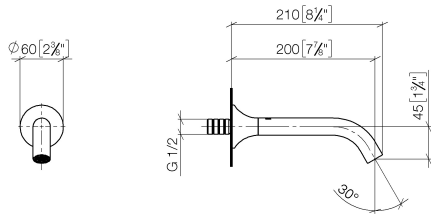
**Recommended miscellaneous**

- Concealed wall elbow -** 35 085 970 90
- min. recess depth 90 mm
  - max. recess depth 163 mm

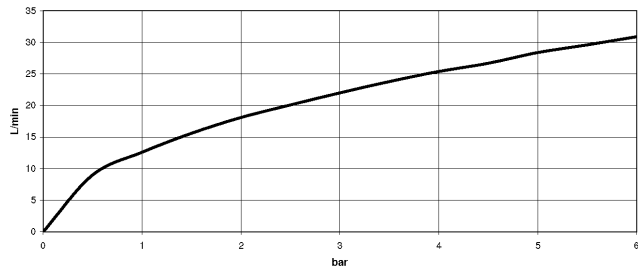


13 801 809 Product version from 3/13/2017

mm [inches]



Flow rate chart



Codes & Standards

DIN 4109

ISO 3822

Scottish Water  
Byelaws

UK Water Supply  
Regulations

Ü-Zeichen



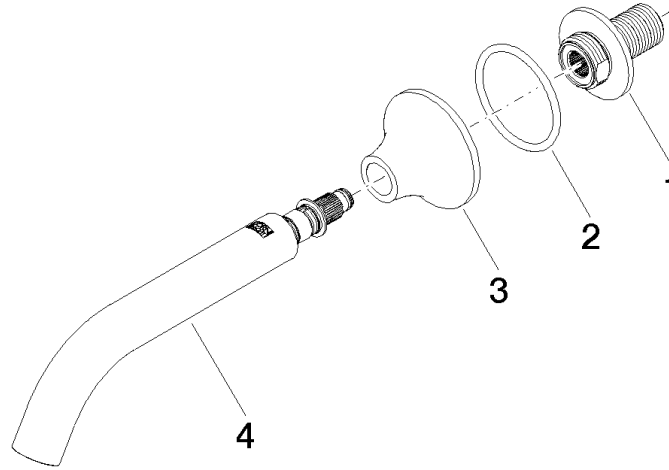
## VAIA Bath spout for wall mounting - Brushed Dark Platinum

VAIA

13 801 809 Product version from 3/13/2017

### Certificates and sustainability

WRAS_2306	LGA_29	EPD-DOR-20230287 -IBA1-EN Environmental.prod uct-declarat
-----------	--------	--



### Spare parts list

No.	Item Number	Name	Quantity used	Delivery time
4	90 28 22 315 00-99	Spout 200 mm, 25,2 l/min. - Brushed Dark Platinum	1.00	40
3	09 27 80 014-99	Rosette Ø 60 x Ø 24 x 37 mm - Brushed Dark Platinum	1.00	40
1	09 24 03 269 90	Nipple Ø 46 x 48,50 mm -	1.00	14
2	09 14 10 084 90	O-Ring EPDM 70 48 x 3,5 mm -	1.00	14