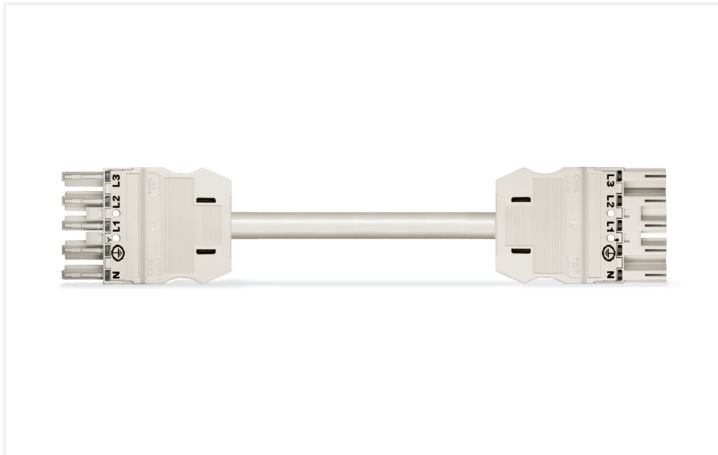


## Data Sheet | Item Number: 771-9995/017-702

pre-assembled interconnecting cable; Eca; Socket/plug; 5-pole; Cod. A; H05Z1Z1-F  
5G 2.5 mm<sup>2</sup>; 7 m; 2,50 mm<sup>2</sup>; white

<https://www.wago.com/771-9995/017-702>



Color: ■ white



Dimensions in mm

### Cable assembly WINSTA® MIDI A coding

For signal and power transmission: The WINSTA® MIDI cable assembly with protection against mismatching. The pluggable installation connectors with spring pressure connection technology function completely without screw connections. They allow resource-efficient, error-free installation in a large number of applications. The coding options reduce installation errors, allowing fast, secure wiring of all components. The pluggable installation connector is protected against ingress by solid objects in accordance with protection type IP20 (When mated: IP2xC (These compact connectors are not designed for use in open, easily accessible areas!)). Thanks to the color coding and mechanical A coding of WINSTA® MIDI pluggable installation connectors, you can clearly distinguish different circuits. The rated current and voltage are important criteria for selecting a pluggable installation connector: They tell us about the product's domains of use. This product has a current rating of 20 A – therefore it is also suitable for powerful loads. Our WINSTA® MIDI product line achieves maximum flexibility for the installation. With its Push-in CAGE CLAMP® spring pressure connection technology, it guarantees error-free, time-saving installation and offers flexibility for meeting an enormous variety of installation requirements. This product meets all the relevant fire protection requirements of fire class E; thus it can be used in domains where fire safety is relevant. In the production of this cable assembly, we eliminated the use of halogen. This is an important contribution to climate protection.

### Pluggable connections instead of screw connections – cable assemblies from WAGO

The cable is pre-assembled with a socket and a plug. WINSTA® is the pluggable connection system that is ideally tailored to the strict requirements of electrical installation. It allows error-free installation of cables and components, quickly and reliably. Now you can also lower installation costs without compromising quality and safety: with protection type IP20 reduces the need for servicing and prevents unnecessary downtime.

- pluggable installation connectors with protection against mismatching
- simple circuits
- with A coding for use in a large number of general mains applications
- custom-engineered solutions
- rapid, structured electrical installation

## Notes

Note Cables with a different fire class can be found in the eShop.

## Electrical data

| Ratings per                     | IEC/EN 60664-1 |     |    | General information        |  |
|---------------------------------|----------------|-----|----|----------------------------|--|
| Overvoltage category            | III            | III | II | Note on contact resistance | approx. 1 mΩ of contact resistance<br>approx. 0.25 mΩ contact transition plug/<br>socket |
| Pollution degree                | 3              | 2   | 2  |                            |  |
| Nominal voltage                 | 400 V          | -   | -  |                            |  |
| Rated impulse withstand voltage | 6 kV           | -   | -  |                            |  |
| Rated current                   | 20 A           | -   | -  |                            |  |

## Connection Data

|                            |                      |                     |                     |
|----------------------------|----------------------|---------------------|---------------------|
| Total number of potentials | 5                    | <b>Connection 1</b> |                     |
| PE function                | Preceding PE contact | Pole number         | 5                   |
|                            |                      | Wire cross-section  | 2.5 mm <sup>2</sup> |
|                            |                      | Connection type     | Socket - Plug       |

## Physical data

|              |                         |
|--------------|-------------------------|
| Pin spacing  | 10 mm / 0.394 inches    |
| Width        | 47 mm / 1.85 inches     |
| Height       | 15.38 mm / 0.606 inches |
| Total length | 7 m                     |

## Mechanical data

|   |   |
|---|---|
| Use                                     | General mains applications  |
| Coding                                  | A   |
| Variable coding                         | Yes   |
| Marking                                 | N ⊕ L1 L2 L3  |
| Potential marking                       | N ⊕ L1 L2 L3  |
| Mating force of a plug-in connection    | approx. 20 ... 70 N (depending on pole number)  |
| Retention force of a plug-in connection | when locked: > 80N  |
| Unmating force of a plug-in connection  | when unlocked: approx. 20 ... 70 N (depending on pole number)   |
| Number of mating cycles                 | 200, without resistive load   |
| Connection type                         | Socket - Plug   |
| Type of pre-assembled cable             | Interconnecting cable   |
| Cable type                              | H05Z1Z1-F 5G2.5   |
| Protection type                         | IP20; When mated: IP2xC (These compact connectors are not designed for use in open, easily accessible areas!) |

## Plug-in connection

|                               |  |
|-------------------------------|--|
| Mismating protection          | Yes  |
| Note on mismating protection  | All <i>WINSTA</i> ® components are 100% protected against mismating when:<br>a.) plugging different numbers of poles<br>b.) plugging while rotated 180<br>c.) plugging while laterally staggered<br>d.) plugging one pole  |
| Locking lever                 | Can be retrofitted   |
| Locking of plug-in connection | Locking lever  |
| Note on locking system        | All connectors for mounted installations (snap-in versions for lighting fixtures or devices, all types of PCB and distribution connectors) are factory-equipped with locking levers to ensure plugs and sockets are securely locked. Additional locking levers are only required for flying leads (plug/socket). |

### Material data

|                                    |  |
|------------------------------------|--|
| Note (material data)               | <a href="#">Information on material specifications can be found here</a> |
| Color                              | white  |
| Insulation material (main housing) | Polyamide (PA66)   |
| Fire class per EN 50575            | E <sub>ca</sub>  |
| Contact material                   | Copper or copper alloy; surface-treated                                  |
| Contact Plating                    | Tin  |
| Fire load                          | 210.271 MJ   |
| Connector color                    | white  |
| Strain relief color                | white  |
| Printing color of strain relief    | black  |
| Sheathed cable color               | white  |
| Printing color of sheathed cable   | black  |
| Halogen-free                       | Yes  |
| Silicon-free                       | Yes  |
| Sheath material                    | Halogen-free   |
| Rubber cable                       | No   |
| Weight                             | 1665.9 g   |
| Copper weight of the raw cable     | 0.12 kg/m  |

### Environmental requirements

|  |   |
|--|---|
| Processing temperature                   | -5 ... +40 °C   |
| Continuous operating temperature         | -35 ... +85 °C  |
| Note on continuous operating temperature | Cable for temperatures ≤ 70 °C (including halogen-free)<br>Insulating parts for temperatures ≤ 105 °C |

### Commercial data

|                       |               |
|-----------------------|---------------|
| PU (SPU)              | 1 pcs         |
| Packaging type        | unpacked      |
| Country of origin     | DE            |
| GTIN                  | 4044918590020 |
| Customs tariff number | 85444290900   |

### Product Classification

|             |                      |
|-------------|----------------------|
| UNSPSC      | 26121629             |
| eCl@ss 10.0 | 27-44-06-04          |
| eCl@ss 9.0  | 27-44-06-04          |
| ETIM 9.0    | EC002587             |
| ETIM 10.0   | EC002587             |
| ECCN        | NO US CLASSIFICATION |

### Environmental Product Compliance

|                        |                         |
|------------------------|-------------------------|
| RoHS Compliance Status | Compliant, No Exemption |
|------------------------|-------------------------|

Approvals / Certificates

General approvals



| Approval                              | Standard  | Certificate Name |
|---------------------------------------|-----------|------------------|
| CCA<br>DEKRA Certification B.V.       | IEC 61535 | NTR NL-7972      |
| KEMA/KEUR<br>DEKRA Certification B.V. | EN 61535  | 71-123834        |

Declarations of conformity and manufacturer's declarations

| Approval  | Standard | Certificate Name |
|---|----------|------------------|
| EU-Declaration of Confor-<br>mity<br>WAGO GmbH & Co. KG | -        | -                |
| UK-Declaration of Confor-<br>mity<br>WAGO GmbH & Co. KG | -        | -                |

Downloads

Environmental Product Compliance

Compliance Search

|   |   |
|---|---|
| Environmental Product<br>Compliance<br>771-9995/017-702 | ↓ |
|---|---|

Documentation

Bid Text

|                                     |            |                 |   |
|-------------------------------------|------------|-----------------|---|
| 771-9995/017-702                    | 19.02.2019 | xml<br>2.92 KB  | ↓ |
| 771-9995/017-702                    | 10.12.2014 | doc<br>25.00 KB | ↓ |
| ausschreiben.de<br>771-9995/017-702 |            |                 | ↓ |

CAD/CAE-Data

CAD data

|                                  |   |
|----------------------------------|---|
| 2D/3D Models<br>771-9995/017-702 | ↓ |
|----------------------------------|---|

CAE data

|                                       |   |
|---------------------------------------|---|
| EPLAN Data Portal<br>771-9995/017-702 | ↓ |
| WSCAD Universe<br>771-9995/017-702    | ↓ |
| ZUKEN Portal<br>771-9995/017-702      | ↓ |

## 1 Compatible Products

### 1.1 Required Accessories

#### 1.1.1 Locking system

##### 1.1.1.1 Locking system



**Item No.: 770-101**

Locking lever; for flying leads; for manual operation; black

**Item No.: 770-121**

Locking lever; for flying leads; for manual operation; white

**Item No.: 770-111**

Locking lever; for flying leads; for tool operation; black

**Item No.: 770-131**

Locking lever; for flying leads; for tool operation; white

### 1.2 Optional Accessories

#### 1.2.1 Cover

##### 1.2.1.1 Cover



**Item No.: 770-201**

Lockout cap; 12-pole, separable; for sockets; Plastic; black

**Item No.: 770-221**

Lockout cap; 12-pole, separable; for sockets; Plastic; white

**Item No.: 770-360**

Lockout cap; for plugs; 5-pole; separable; yellow

**Item No.: 897-2005**

Protective cap; Type4; for sockets and plugs; PVC; red

#### 1.2.2 Installation

##### 1.2.2.1 Mounting accessories



**Item No.: 770-310**

Mounting carrier; 2- to 5-pole; for flying leads; black

#### 1.2.3 Marking

##### 1.2.3.1 Marker



**Item No.: 770-450/000-006**

Marker card; Plastic; blue

**Item No.: 770-450/000-001**

Marker card; Plastic; green

**Item No.: 770-450/000-012**

Marker card; Plastic; orange

**Item No.: 770-450/000-005**

Marker card; Plastic; red



**Item No.: 770-450**

Marker card; Plastic; white

**Item No.: 770-450/000-002**

Marker card; Plastic; yellow

##### 1.2.3.2 Marking strip



**Item No.: 210-334**

Marking strips; as a DIN A4 sheet; Strip width 5 mm; Strip length 182 mm; plain; Self-adhesive; white