

Product data

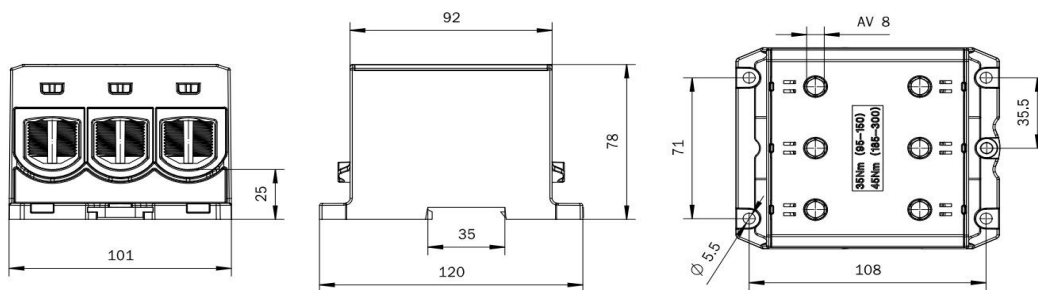
Product code	VC05-0492	STK-code	1914355	EAN-code	6430051860270
Product name	OTL-connector 3xAl/Cu 95-300mm ² (Black)			ETIM class	EC000897
Wires	3xAl/Cu 95-300mm ²				

Technical data

Nominal current (IEC)	Cu	850	A
	Al	630	A
Nominal voltage (IEC)	1000 V AC / 1500 V DC		
		-	
		-	
		-	
Number of poles		1	pcs
Max. Cross section		300	mm ²
Tightening torque			
	95-150 mm ²	35	Nm
	185-300 mm ²	45	Nm
		-	
		-	
Min. installation temperature		+5	°C
Operating temperature		-25...+80	°C
Weight		680	g
IP-protection		IP20	
Standards	EN 61238-1:2003; EN 60947-7-(1-2):2009		
Color / Material	Black RAL 9017/ PA66-V0		
Mounting / Connection	DIN rail and screw (M5) mounting		


Description

OTL-connectors are designed for connecting and branching aluminium and copper conductors. The body is made of tin plated aluminium. Housing is made of UL94 V0 class polyamide. Made in Finland.

Drawing

Package

Package	Box	Pcs / Package	1	Weight [kg]	0,80
Length [mm]	165	Width [mm]	110	Height [mm]	150

Ouneva Oy

Teollisuustie 21
 FI-82730 Tuupovaara
 Finland

www.ounevagroup.fi
www.ounevaproducts.fi