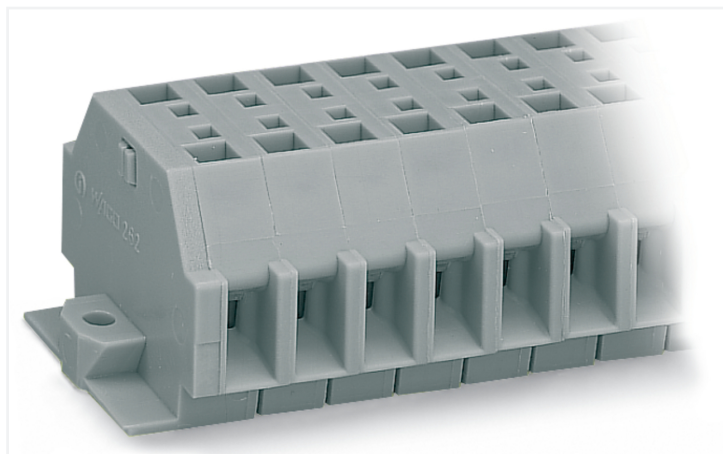


## Data Sheet | Item Number: 262-102

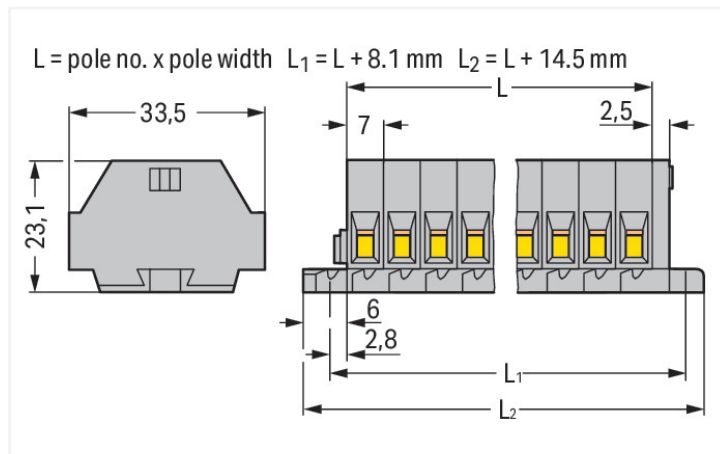
2-conductor terminal strip; without push-buttons; with fixing flanges; 2-pole; for screw or similar mounting types; Fixing hole 3.2 mm Ø; 4 mm<sup>2</sup>; CAGE CLAMP®; 4,00 mm<sup>2</sup>; gray

<https://www.wago.com/262-102>



Color: ■ gray

Similar to illustration



Dimensions in mm

### Through terminal block, 262 Series, CAGE CLAMP®

Easily, quickly and safely connect conductors with this through terminal block (item number 262-102). Conductors can only be connected to this through terminal block if their strip length is between 9 and 10 mm. Our mini rail-mount terminal blocks are the perfect choice for working in confined spaces. A large selection of mounting and actuation variants means you can find a suitable mini terminal block for every purpose. This also means you can adapt the terminal blocks to your unique requirements. This product features conductor terminals and utilizes CAGE CLAMP®. Our celebrated universal connection known as CAGE CLAMP® is the industry standard when it comes to connection technology and electrical interconnections. The item's dimensions are (28.4 x 33.5 x 23.1) mm (width x height x depth). This through terminal block is suitable for conductor cross sections ranging from 0.08 mm<sup>2</sup> to 4 mm<sup>2</sup>.

An operating tool is used to operate this mini rail-mount terminal block.

#### Electrical data

##### Ratings per IEC/EN

|   |   |
|---|---|
| Nominal voltage (III/3)                   | 690 V   |
| Rated impulse withstand voltage (III / 3) | 8 kV  |
| Rated current                             | 32 A  |
| Legend (ratings)                          | (III / 3) ≙ Overvoltage category III / Pollution degree 3 |

##### Approvals per

##### UL 1059

| Use group     | B     | C     | D     |
|---------------|-------|-------|-------|
| Rated voltage | 300 V | 300 V | 300 V |
| Rated current | 20 A  | 20 A  | 10 A  |

##### Approvals per

##### CSA 22.2 No 158

| Use group     | B     | C     | D     |
|---------------|-------|-------|-------|
| Rated voltage | 600 V | 300 V | 600 V |
| Rated current | 5 A   | 25 A  | 5 A   |

##### General information

Wiring direction Side-entry wiring

### Connection Data

|                            |   |
|----------------------------|---|
| Clamping units             | 4 |
| Total number of potentials | 2 |
| Number of levels           | 1 |

### Connection 1

|                                 |                                    |
|---------------------------------|------------------------------------|
| Connection technology           | CAGE CLAMP®                        |
| Actuation type                  | Operating tool                     |
| Connectable conductor materials | Copper                             |
| Solid conductor                 | 0.08 ... 4 mm² / 28 ... 12 AWG     |
| Fine-stranded conductor         | 0.08 ... 4 mm² / 28 ... 12 AWG     |
| Strip length                    | 9 ... 10 mm / 0.35 ... 0.39 inches |
| Pole number                     | 2                                  |
| Wiring direction                | Side-entry wiring                  |

### Physical data

|              |                        |
|--------------|------------------------|
| Width        | 28.4 mm / 1.118 inches |
| Height       | 33.5 mm / 1.319 inches |
| Depth        | 23.1 mm / 0.909 inches |
| Module width | 7 mm / 0.276 inches    |

### Mechanical data

|               |                 |
|---------------|-----------------|
| Design        | horizontal type |
| Mounting type | Mounting flange |
| Marking level | Side marking    |

### Material data

|                                    |  |
|------------------------------------|--|
| Note (material data)               | <a href="#">Information on material specifications can be found here</a> |
| Color                              | gray   |
| Material group                     | I  |
| Insulation material (main housing) | Polyamide (PA66)   |
| Flammability class per UL94        | V0   |
| Fire load                          | 0.21 MJ  |
| Halogen-free                       | Yes  |
| Weight                             | 10.1 g   |

### Environmental requirements

|                                  |                 |
|----------------------------------|-----------------|
| Processing temperature           | -35 ... +85 °C  |
| Continuous operating temperature | -60 ... +105 °C |

### Commercial data

|                       |                           |
|-----------------------|---------------------------|
| Product Group         | 9 (Std Chassis Mt Blocks) |
| PU (SPU)              | 100 pcs                   |
| Packaging type        | Box                       |
| Country of origin     | DE                        |
| GTIN                  | 4044918640152             |
| Customs tariff number | 85369010000               |

### Product Classification

|             |                      |
|-------------|----------------------|
| UNSPSC      | 39121410             |
| eCl@ss 10.0 | 27-14-11-06          |
| eCl@ss 9.0  | 27-14-11-06          |
| ETIM 9.0    | EC001284             |
| ETIM 10.0   | EC001284             |
| ECCN        | NO US CLASSIFICATION |

### Environmental Product Compliance

|                        |                         |
|------------------------|-------------------------|
| RoHS Compliance Status | Compliant, No Exemption |
|------------------------|-------------------------|

### Approvals / Certificates

#### General approvals



| Approval                              | Standard | Certificate Name |
|---------------------------------------|----------|------------------|
| CCA<br>DEKRA Certification B.V.       | EN 60998 | NTR NL 7661      |
| CSA<br>DEKRA Certification B.V.       | C22.2    | 70010891         |
| KEMA/KEUR<br>DEKRA Certification B.V. | EN 60998 | 71-102644        |
| UR<br>Underwriters Laboratories Inc.  | UL 1059  | E45172           |

#### Declarations of conformity and manufacturer's declarations

| Approval   | Standard | Certificate Name |
|--|----------|------------------|
| EU-Declaration of Conformity<br>WAGO GmbH & Co. KG | -        | -                |
| UK-Declaration of Conformity<br>WAGO GmbH & Co. KG | -        | -                |

### Approvals for marine applications



| Approval   | Standard  | Certificate Name  |
|--|-----------|-------------------|
| ABS<br>American Bureau of Shipping               | -         | 24-0095979-PDA    |
| BV<br>Bureau Veritas S.A.                        | EN 60947  | 07436/G0 BV       |
| DNV GL<br>Det Norske Veritas, Germanischer Lloyd | -         | TAE00001V2        |
| LR<br>Lloyds Register                            | IEC 60998 | LR22173030TA      |
| PRS<br>Polski Rejestr Statków                    | -         | TE/1094/880590/23 |

**Downloads**

**Environmental Product Compliance**

|  |  |  |   |
|--|--|--|---|
| Compliance Search                        |  |  |   |
| Environmental Product Compliance 262-102 |  |  | ↓ |

**Documentation**

|          |            |                 |   |
|----------|------------|-----------------|---|
| Bid Text |            |                 |   |
| 262-102  | 19.02.2019 | xml<br>3.10 KB  | ↓ |
| 262-102  | 17.08.2017 | doc<br>24.50 KB | ↓ |

**CAD/CAE-Data**

|                      |   |
|----------------------|---|
| CAD data             |   |
| 2D/3D Models 262-102 | ↓ |

|                           |   |
|---------------------------|---|
| CAE data                  |   |
| EPLAN Data Portal 262-102 | ↓ |
| WSCAD Universe 262-102    | ↓ |
| ZUKEN Portal 262-102      | ↓ |

**1 Compatible Products**

**1.1 Optional Accessories**

**1.1.1 Ferrule**

**1.1.1.1 Ferrule**

|   |   |   |  |
|---|---|---|--|
|   |   |   |  |
| <p><b>Item No.: 216-241</b><br/>                 Ferrule; Sleeve for 0.5 mm<sup>2</sup> / 20 AWG; un-insulated; electro-tin plated; electrolytic copper; gastight crimped; acc. to DIN 46228, Part 4/09.90; white</p> | <p><b>Item No.: 216-141</b><br/>                 Ferrule; Sleeve for 0.5 mm<sup>2</sup> / 20 AWG; un-insulated; electro-tin plated; electrolytic copper; gastight crimped; acc. to DIN 46228, Part 1/08.92</p>        | <p><b>Item No.: 216-242</b><br/>                 Ferrule; Sleeve for 0.75 mm<sup>2</sup> / 18 AWG; un-insulated; electro-tin plated; electrolytic copper; gastight crimped; acc. to DIN 46228, Part 4/09.90; gray</p> | <p><b>Item No.: 216-262</b><br/>                 Ferrule; Sleeve for 0.75 mm<sup>2</sup> / 18 AWG; un-insulated; electro-tin plated; electrolytic copper; gastight crimped; acc. to DIN 46228, Part 4/09.90; gray</p>          |
|   |   |   |  |
| <p><b>Item No.: 216-142</b><br/>                 Ferrule; Sleeve for 0.75 mm<sup>2</sup> / 18 AWG; un-insulated; electro-tin plated; electrolytic copper; gastight crimped; acc. to DIN 46228, Part 1/08.92</p>       | <p><b>Item No.: 216-243</b><br/>                 Ferrule; Sleeve for 1 mm<sup>2</sup> / AWG 18; un-insulated; electro-tin plated; electrolytic copper; gastight crimped; acc. to DIN 46228, Part 4/09.90; red</p>     | <p><b>Item No.: 216-263</b><br/>                 Ferrule; Sleeve for 1 mm<sup>2</sup> / AWG 18; un-insulated; electro-tin plated; electrolytic copper; gastight crimped; acc. to DIN 46228, Part 4/09.90; red</p>     | <p><b>Item No.: 216-143</b><br/>                 Ferrule; Sleeve for 1 mm<sup>2</sup> / AWG 18; un-insulated; electro-tin plated; electrolytic copper; gastight crimped; acc. to DIN 46228, Part 1/08.92</p>                   |
|   |   |   |  |
| <p><b>Item No.: 216-244</b><br/>                 Ferrule; Sleeve for 1.5 mm<sup>2</sup> / AWG 16; un-insulated; electro-tin plated; electrolytic copper; gastight crimped; acc. to DIN 46228, Part 4/09.90; black</p> | <p><b>Item No.: 216-264</b><br/>                 Ferrule; Sleeve for 1.5 mm<sup>2</sup> / AWG 16; un-insulated; electro-tin plated; electrolytic copper; gastight crimped; acc. to DIN 46228, Part 4/09.90; black</p> | <p><b>Item No.: 216-284</b><br/>                 Ferrule; Sleeve for 1.5 mm<sup>2</sup> / AWG 16; un-insulated; electro-tin plated; electrolytic copper; gastight crimped; acc. to DIN 46228, Part 4/09.90; black</p> | <p><b>Item No.: 216-144</b><br/>                 Ferrule; Sleeve for 1.5 mm<sup>2</sup> / AWG 16; un-insulated; electro-tin plated; electrolytic copper; gastight crimped; acc. to DIN 46228, Part 1/08.92; silver-colored</p> |

1.1.1.1 Ferrule



**Item No.: 216-289**  
 Ferrule; Sleeve for 10 mm<sup>2</sup> / AWG 8; insulated; electro-tin plated; electrolytic copper; gastight crimped; acc. to DIN 46228, Part 4/09.90; red



**Item No.: 216-209**  
 Ferrule; Sleeve for 10 mm<sup>2</sup> / AWG 8; insulated; electro-tin plated; red



**Item No.: 216-109**  
 Ferrule; Sleeve for 10 mm<sup>2</sup> / AWG 8; un-insulated; electro-tin plated



**Item No.: 216-210**  
 Ferrule; Sleeve for 16 mm<sup>2</sup> / AWG 6; insulated; electro-tin plated; electrolytic copper; gastight crimped; acc. to DIN 46228, Part 4/09.90; blue



**Item No.: 216-110**  
 Ferrule; Sleeve for 16 mm<sup>2</sup> / AWG 6; un-insulated; electro-tin plated; brown metallic



**Item No.: 216-246**  
 Ferrule; Sleeve for 2.5 mm<sup>2</sup> / AWG 14; insulated; electro-tin plated; electrolytic copper; gastight crimped; acc. to DIN 46228, Part 4/09.90; blue



**Item No.: 216-266**  
 Ferrule; Sleeve for 2.5 mm<sup>2</sup> / AWG 14; insulated; electro-tin plated; electrolytic copper; gastight crimped; acc. to DIN 46228, Part 4/09.90; blue



**Item No.: 216-286**  
 Ferrule; Sleeve for 2.5 mm<sup>2</sup> / AWG 14; insulated; electro-tin plated; electrolytic copper; gastight crimped; acc. to DIN 46228, Part 4/09.90; blue



**Item No.: 216-267**  
 Ferrule; Sleeve for 4 mm<sup>2</sup> / AWG 12; insulated; electro-tin plated; electrolytic copper; gastight crimped; acc. to DIN 46228, Part 4/09.90; gray



**Item No.: 216-287**  
 Ferrule; Sleeve for 4 mm<sup>2</sup> / AWG 12; insulated; electro-tin plated; electrolytic copper; gastight crimped; acc. to DIN 46228, Part 4/09.90; gray



**Item No.: 216-208**  
 Ferrule; Sleeve for 6 mm<sup>2</sup> / AWG 10; insulated; electro-tin plated; electrolytic copper; gastight crimped; acc. to DIN 46228, Part 4/09.90; yellow



**Item No.: 216-288**  
 Ferrule; Sleeve for 6 mm<sup>2</sup> / AWG 10; insulated; electro-tin plated; electrolytic copper; gastight crimped; acc. to DIN 46228, Part 4/09.90; yellow



**Item No.: 216-108**  
 Ferrule; Sleeve for 6 mm<sup>2</sup> / AWG 10; un-insulated; electro-tin plated; silver-colored

1.1.2 Installation

1.1.2.1 Mounting accessories



**Item No.: 209-137**  
 Mounting adapter; can be used as end stop; 6.5 mm wide; gray



**Item No.: 209-123**  
 Mounting foot with screw; can be screwed on terminal blocks with fixing flange; 6.4 mm wide; gray

1.1.3 Jumper

1.1.3.1 Jumper



**Item No.: 262-402**  
 Jumper; for conductor entry; 2-way; insulated; gray

1.1.4 Marking

1.1.4.1 Marking strip



**Item No.: 210-833**  
 Marking strips; 25 m on roll; 6 mm wide; plain; Self-adhesive; white

### 1.1.5 Test and measurement

#### 1.1.5.1 Testing accessories



**Item No.: 249-137**

Test plug module; without locking device; modular; for 2-conductor terminal blocks; gray

### 1.1.6 Tool

#### 1.1.6.1 Operating tool



**Item No.: 210-658**

Operating tool; Blade: 3.5 x 0.5 mm; with a partially insulated shaft; angled; short; multicoloured



**Item No.: 210-720**

Operating tool; Blade: 3.5 x 0.5 mm; with a partially insulated shaft; multicoloured

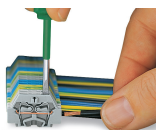


**Item No.: 210-657**

Operating tool; Blade: 3.5 x 0.5 mm; with a partially insulated shaft; short; multicoloured

### Installation Notes

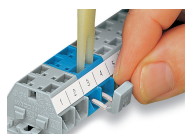
#### Conductor termination



**CAGE CLAMP® connection**

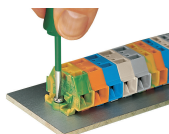
Inserting a conductor.  
With ferruled conductors, it is necessary to use a terminal block one size larger than the conductor's nominal cross-section.

#### Commoning

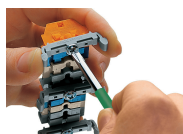


Commoning with comb-style jumper bar.

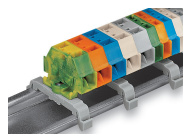
### Installation



Mounting and securing a terminal strip directly to the plate via screw-type flanges.



Terminal strip with mounting flanges  
Screwing a mounting foot (209-123).  
(Distance between mounting feet: approx. 25 ... 30 mm)



Terminal strip; with mounting flanges; for DIN-35 rail



Terminal strip with mounting flanges, for screw or similar mounting types, 3.2 mm mounting hole diameter (with 209-123 Mounting Foot also for DIN-35 rail)

## Marking



Marking with self-adhesive marking strips.

Marking by direct printing (upon request).