

TARA Wall valve clockwise closing 1/2" - Brushed Dark Platinum

TARA

36 607 892 Product version up to 10/27/2020

- rosette Ø 55 mm
- head part with cut-to-length spindle and sleeve
- WRAS



	Brushed Dark Platinum	36 607 892-99
	Chrome	36 607 892-00
	Brushed Platinum	36 607 892-06
	Platinum	36 607 892-08
	Dark Chrome	36 607 892-19
	Brushed Durabronze (23kt Gold)	36 607 892-28
	Matte Black	36 607 892-33
	Brushed Dark Brass (PVD)	36 607 892-39
	Brushed Bronze (PVD)	36 607 892-42
	Brushed Dark Bronze (PVD)	36 607 892-43
	Brushed Champagne (22kt Gold)	36 607 892-46
	Champagne (22kt Gold)	36 607 892-47
	Brushed Chrome	36 607 892-93

Required miscellaneous

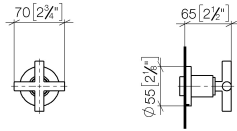
Wall valve 1/2" - 35 607 970 90



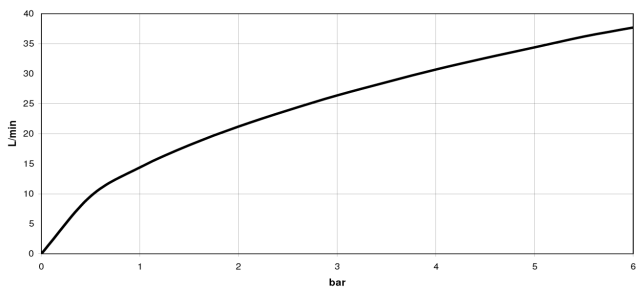
- min. recess depth 85 mm
- max. recess depth 145 mm

36 607 892 Product version up to 10/27/2020

mm [inches]



Flow rate chart



Codes & Standards

ASME A112.18.1	cUPC	DIN 4109	EN 1111
EN 200	ISO 3822	Scottish Water Byelaws	UK Water Supply Regulations

Ü-Zeichen



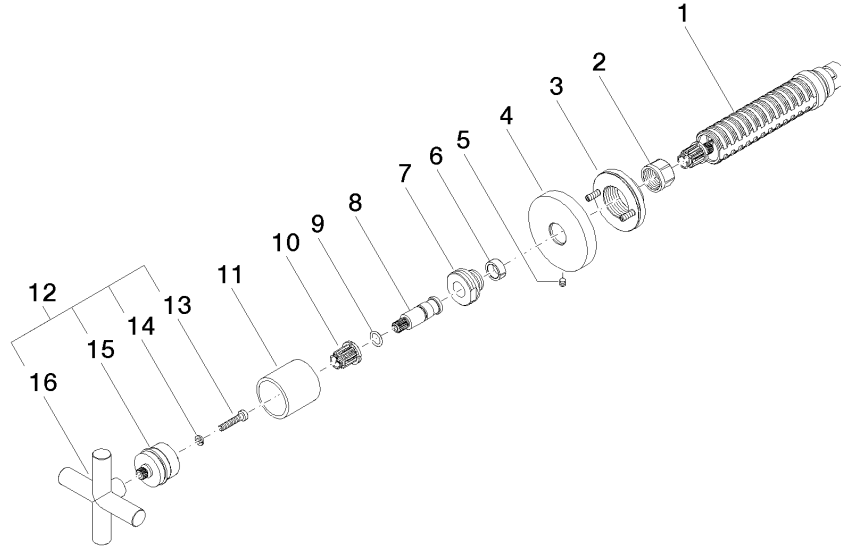
TARA Wall valve clockwise closing 1/2" - Brushed Dark Platinum

TARA

36 607 892 Product version up to 10/27/2020

Certificates and sustainability

WRAS_2011	DVGW_DW-6501DN0	DVGW_DW-6512DN0	LGA_29	WRAS_2010
LGA_29	IAPMO_4976 (EPD-DOR-20230287 -IBA1-EN Environmental.prod uct-declarat		



Spare parts list

No.	Item Number	Name	Quantity used	Delivery time
1	90 90 03 143 00 90	Head part clockwise closing 1/2" -	1.00	14
5	90 31 11 007 00 90	Mounting Threaded pin with hexagon socket M4 x 6 mm	1.00	14
8	09 29 06 022 90	Connection Ø 11 x 38,5 mm -	1.00	14
12	90 20 89 010 10-99	Handle TARA - Brushed Dark Platinum	1.00	40
4	09 27 89 108-99	Rosette Ø 55 x Ø 15,1 x 9 mm - Brushed Dark Platinum	1.00	40
11	09 21 02 144-99	Cover Ø 30 x 30 mm - Brushed Dark Platinum	1.00	40
6	90 14 15 020 03 90	Support ring -	1.00	14
16	09 20 89 010-99	Handle 70 x 70 x 22,5 mm - Brushed Dark Platinum	1.00	-
Spare part can no longer be ordered, please order the replacement item				
	90208901010-99	Handle TARA - Brushed Dark Platinum		
13	90 30 30 075 00 90	Mounting Cylinder head screw with hexagon socket Low profile M4 x 20 mm -	1.00	14
15	90 12 12 007 00-99	Handle Socket retainer Ø 29 x 26 mm - Brushed Dark Platinum	1.00	40
7	09 24 05 002 90	Nipple Ø 24 x 16 mm -	1.00	14
14	90 30 11 029 00 90	Connection Spring lock washer Ø 4 -	1.00	14
3	90 21 02 108 00 90	Wall disc complete -	1.00	14
10	90 12 12 002 00 90	Fixing cap white Ø 15 x 12 mm -	1.00	14
2	90 23 30 023 00 90	Cap nut -	1.00	14
9	90 14 10 060 00 90	O-Ring 8,0 x 1,5 mm -	1.00	14