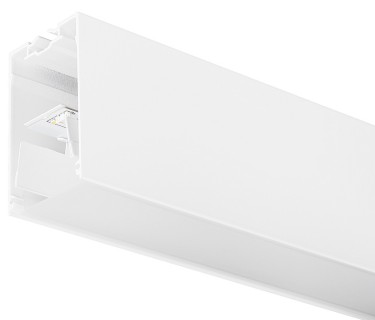


# Concord

MC2 2.4M 4K DALIEM WHT OPAL  
2071486



## Features

• MC2 2.4M 4K DALIEM WHT OPAL LED luminaire, white RAL9016 finishing, direct distribution, trimless detail for a seamless finish, suitable for recessed, semi-recessed, surface-mounted or suspended installation either horizontally or vertically, various accessories available, compact and minimalist design based on the Golden Mean, ideal for offices, meeting rooms, corridors, education facilities, museums and libraries, extruded aluminium body, diffuser: opal, colour temperature: 4000K neutral white, total system power: 37W, total fixture output: 4800lm, emergency output: 147lm, luminaire efficacy: 130lm/W, LOR: 100%, colour rendering: Ra >80, LED Chromacity: 3 step MacAdam ellipse, lifespan: 66,000 hours L90B10, IR/UV free light source without heat radiation, operating voltage: 220-240V / 50-60Hz, drive current: 800mA, electronic driver, DALI dimmable, integral emergency: 3 hour maintained, electrical protection: CLASS I, IP20, suitable for internal environment only.

## Product Overview

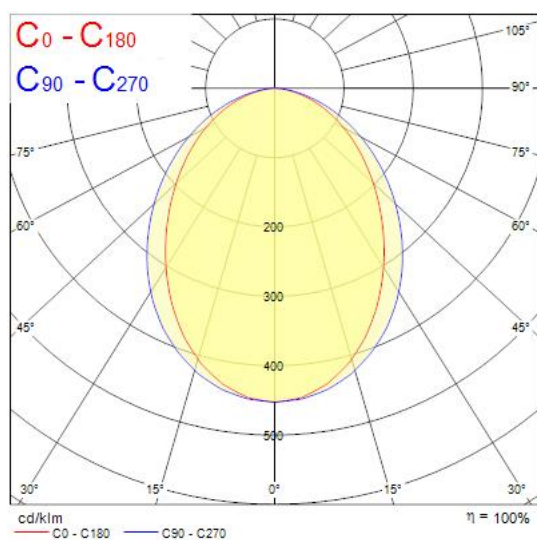
<b>Product name</b>	MC2 2.4M 4K DALIEM WHT OPAL
<b>Technology</b>	LED (3 SDCM)
<b>Cap/Base</b>	N/A
<b>Housing</b>	Aluminium
<b>Mount</b>	Ceiling recessed mounting
<b>General application</b>	Education, Hospitality, Office, Retail
<b>ETIM Class</b>	EC002892
<b>Fixture luminous flux (lm)</b>	4800
<b>Luminaire efficacy (lm/W)</b>	130
<b>LOR (%)</b>	100
<b>Colour temperature (K)</b>	4000

# Concord

## MC2 2.4M 4K DALIEM WHT OPAL 2071486

Light colour	Neutral White
CRI (Ra)	80
Colour Variation Initial (SDCM)	3
Glare control	< 24
Photobiological Risk Group	RG0
Luminous flux (emergency) (lm)	147
Luminous flux (emergency) (lm)	147
Total power consumption (W)	37
Electrical protection	Class I
Control gear type	Electronic ballast
Dimmable	Yes
Minimum dimming level (%)	1
Housing colour	White
IP rating	IP20
IK rating	IK03
Product EAN number	5025768714865
Warranty	5 years
Useful luminous flux (#use)	4800
Dimming method	DALI

### Photometry



### Technical drawings

