

Finishing set for timer, tunable to 15 mins., champagne coated

157-64806

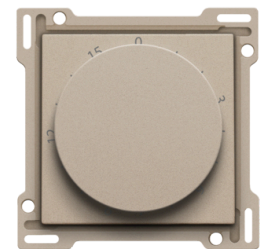


Central plate for time switch. This time switch allows you to set a time period of 15 minutes during which, for example, the light remains on. Colour: champagne coated.

Technical data

Finishing set for timer, tunable to 15 mins., champagne coated.

This central plate is surrounded with a flat edge that is equipped at all 4 corners with a rectangular opening, each containing a multi-positional snap hook. The construction of the central plate ensures that the faceplate can always be attached flat to the wall, even in cases of untidy plasterwork. This works in two directions: If the flush-mounting box sticks out of the plasterwork, the multi-positional snap hooks can compensate for a 1 to 1.2 mm margin; if the flush-mounting box is sunk too deeply in the plasterwork, the snap hooks can compensate for up to a 1.8 mm margin. The flat edge around the central plate also has 4 round openings that ensure the correct positioning of the faceplate in relation to the central plate. After mounting all components (faceplate, finishing set and switch), no metal parts are visible thanks to the flat edge of the central plate.



- Function: the central plate (slot 1 x 5 mm) is screwed onto the time switch. The setting key is mounted over the control axis of the mechanism
- Material finishing: polycarbonate (PC) + acrylic-styrene-acrylate (ASA)
- Type of control: rotary button
- Colour: champagne coated
- Colour RAL (approximately): 080 70 10
- Colour NCS (approximately): NCS S 4005-Y20R
- Surface treatment: coated
- Imprint indication: the central plate is equipped with an indelibly imprinted time scale in minutes with the intervals 0, 3, 6, 9, 12 and 15
- Number of lenses: 0
- Dismantling method: unscrew the central plate
- Minimum ambient temperature: 5 °C
- Maximum ambient temperature: 40 °C
- Protection degree: IP41 for the combination of a mechanism, central plate and faceplate
- Impact resistance: the combination of a mechanism, a central plate and a faceplate has an impact-resistance of IK06
- Fire safety:

- all plastic components are self-extinguishing (comply with a filament test of 650°C)
- all plastic components are halogen-free
- Dimensions of finishing with flat edge: 56 x 56 mm (HxW), dimensions of visible area of finishing: 45 x 45 mm (HxW)
- Dimensions (HxWxD): 55.8 mm x 55.8 mm x 23.8 mm
- Marking: CE