


Handle for spray/bath deck mounting Hot Lever 113 x 68 x 60 mm -
Champagne (22kt Gold)

SPARE PARTS

90 20 80 013 01 Product version from 4/1/2025



	Champagne (22kt Gold)	90 20 80 013 01-47
	Chrome	90 20 80 013 01-00
	Brushed Platinum	90 20 80 013 01-06
	Platinum	90 20 80 013 01-08
	Dark Chrome	90 20 80 013 01-19
	Brushed Light Gold (PVD)	90 20 80 013 01-27
	Brushed Durabrass (23kt Gold)	90 20 80 013 01-28
	Brushed Gold (PVD)	90 20 80 013 01-37
	Brushed Dark Brass (PVD)	90 20 80 013 01-39
	Brushed Champagne (22kt Gold)	90 20 80 013 01-46
	Brushed Dark Platinum	90 20 80 013 01-99



Handle for spray/bath deck mounting Hot Lever 113 x 68 x 60 mm -
Champagne (22kt Gold)

SPARE PARTS

90 20 80 013 01 Product version from 4/1/2025



Handle for spray/bath deck mounting Hot Lever 113 x 68 x 60 mm -
Champagne (22kt Gold)

SPARE PARTS

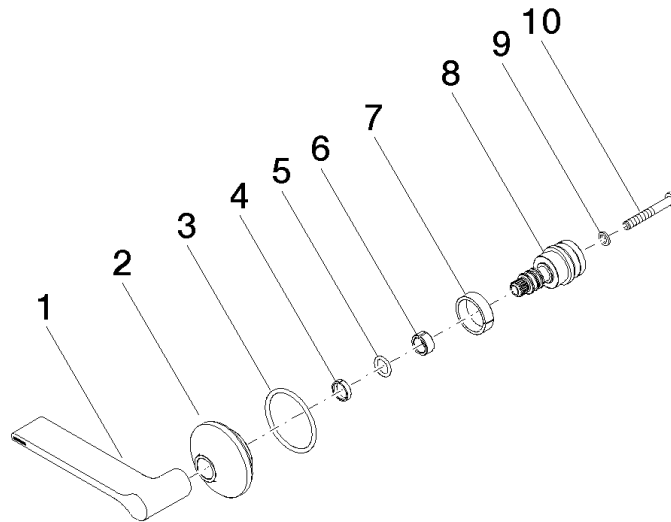
90 20 80 013 01 Product version from 4/1/2025

Handle for spray/bath deck mounting Hot Lever 113 x 68 x 60 mm -
Champagne (22kt Gold)

SPARE PARTS

90 20 80 013 01 Product version from 4/1/2025

Parts for other
finishes can be found
here: Chrome



Spare parts list

No.	Item Number	Name	Quantity used	Delivery time
2	09 27 80 017-47	Rosette Ø 38 x 19 mm - Champagne (22kt Gold)	1.00	40
1	09 20 80 013-47	handle (hot)	1.00	82
8	09 29 06 120 90	Spindle for handle retainer Ø 20 x 38 mm -	1.00	14
5	09 14 10 061 90	O-Ring EPDM 70 7,5 x 1,52 mm -	1.00	14
4	09 28 10 170 90	Ring Ø 10,5 x 2,5 mm -	1.00	14
3	09 14 10 137 90	O-Ring EPDM 70 29,0 x 2,0 mm -	1.00	14
6	09 14 15 028 90	Guide ring Ø 1,5 x 5 mm -	1.00	14
10	09 30 30 158 90	Mounting Cylinder head screw with hexagon socket Low profile M4 x 30 mm -	1.00	14
9	09 30 11 194 90	Lock washer Type S Ø 7 x 1 mm -	1.00	14
7	90 14 15 021 00 90	Ring Ø 19,5 x 5,4 mm -	1.00	14