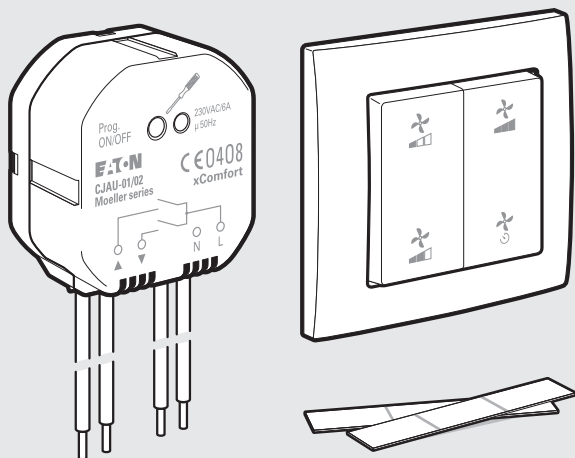



## Quick Installation Card

Hurtig installasjon kort - Snelle installatiekaart -  
Schnellinstallationskarte - Karta pro rychlou instalaci

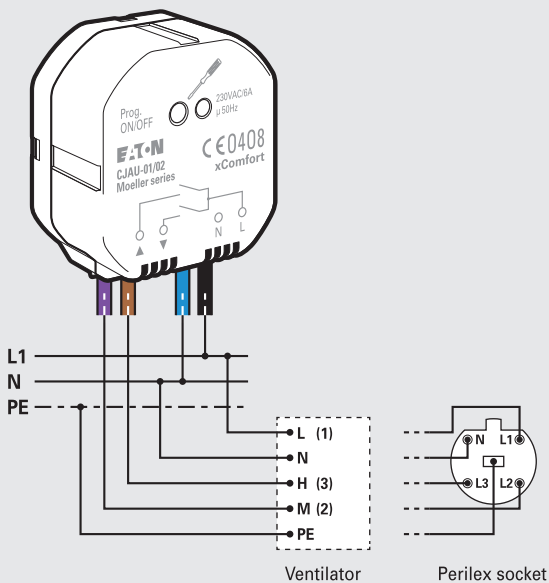


Content - Innhold - Inhoud - Inhalt - Obsah

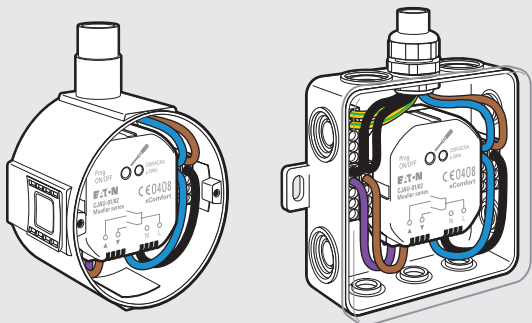
### Technical Data / Technische gegevens / Tekniske data / Technische Daten / Technická data

Power supply	230 VAC, 50Hz
Load	Load: R: 6A 
Output purple	Medium speed
Output brown	High speed
Timer	10, 30 minutes
Standby	480mW (TYP)
Battery	CR2450N 3V (included)
Battery lifetime	10 years (TYP)
RF	868,3MHz (xComfort compatible)
Degree of protection	IP20
Actor	-5 to +45°C
Sensor	+5 to +45°C

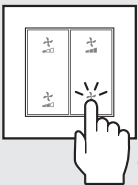
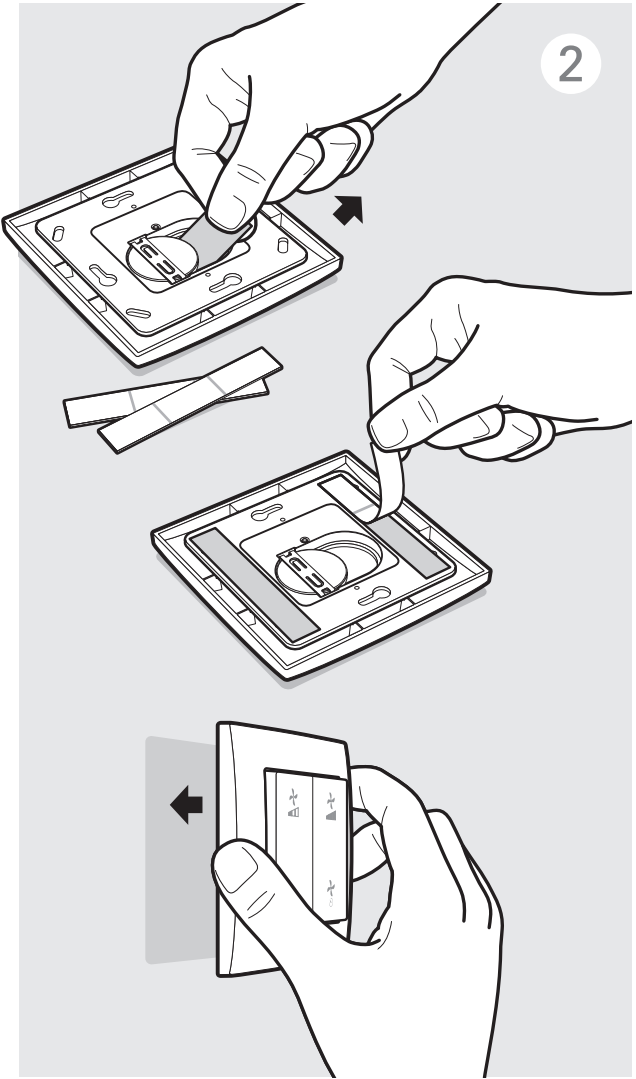
1



## Mounting examples



2



### Operation



< 0.5 s 10 minutes  
> 2 s 30 minutes



Low



Medium



High

## Declaration of Conformity

We, EATON Industries (Austria) GmbH  
3943 Schrems, Eugenia 1  
Austria

declare under our sole responsibility that the product (family)

**Eaton - Shutting actuator,  
CJAU-...**

(the declaration of conformity applies to all listed types within our actual product catalogue)

provided that it is installed, maintained and used in the application intended for, with respect to the relevant manufacturers instructions, installation standards and "good engineering practices"

complies with the provisions of Council directive(s):

RED Directive 2014/53/EU

RoHS Directive 2011/65/EU

based on compliance with following standard(s):

EN 301489-3 V2.1.1, EN 300220-2 V3.1.1, EN 50491-5-1:2010,  
EN 50491-5-2:2010, EN 62479:2010, EN 50428:2005 + A1:2007 +  
A2:2009, EN 50581:2012

EU- type examination performed by:  
TÜV Austria Services GmbH, Notified Body  
1230 Vienna, Deutschstrasse 10, Austria

Affixing date of CE mark: 2003

Doc.Id: CJAU-...\_171117

  
Ferdinando Ceccarelli

Senior Vice President  
General Manager

17.11.2017

  
Friedrich Schöder

Director Quality  
& Systems

## Declaration of Conformity

We, EATON Industries (Austria) GmbH  
3943 Schrems, Eugenia 1  
Austria

declare under our sole responsibility that the product (family)

**Eaton - Push Button,  
CTAA-...**

(the declaration of conformity applies to all listed types within our actual product catalogue)

provided that it is installed, maintained and used in the application intended for, with respect to the relevant manufacturers instructions, installation standards and "good engineering practices"

complies with the provisions of Council directive(s):

RED Directive 2014/53/EU

RoHS Directive 2011/65/EU

based on compliance with following standard(s):

EN 301489-3 V2.1.1, EN 300220-2 V3.1.1, EN 50491-5-1:2010,  
EN 50491-5-2:2010, EN 60950-1:2006 + A11:2009 + A1:2010 +  
A12:2011 + A2:2013, EN 62479:2010, EN 50581:2012

EU- type examination performed by:  
TÜV Austria Services GmbH, Notified Body  
1230 Vienna, Deutschstrasse 10, Austria

Affixing date of CE mark: 2003

Doc.Id: CTAA-...\_171117

  
Ferdinando Ceccarelli

Senior Vice President  
General Manager

17.11.2017

  
Friedrich Schöder

Director Quality  
& Systems