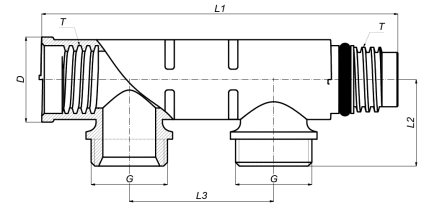


## VSKEK-0502: Extension or body for manifold, 2 eurocone connections 2x3/4"



### Commercial information

Full Flow Manifold the universal synthetic distributor with 2 to 12 outputs (and more).

Advantages:

- A separate pipe circuit for each tap point; connections in the floor can thus be avoided.
- Multifunctional and modular.
- 100 % corrosion-free.
- Maximum amount of connections in very short construction length.
- Improves the balance in a system.
- Cost-effective solution.
- Fixing materials available.
- KIWA, KOMO and ATG approved.
- Suitable for both press and push-fit applications.
- Can be fitted with a 3/8" air vent (matching article 18EK-0503).
- Various group connections in 3/4" eurocone possible.

Connections: Push-fit, Press PVDF, Press brass, Ball valve for C/H applications, Manifold: Henco dimensions internal thread x external thread, Groups: Eurocone 3/4".

Supply diameters: 20mm and 26mm.

#### Basic unit dimensions

|            |          |
|------------|----------|
| Height     | 30 mm    |
| Length     | 124 mm   |
| Width      | 45 mm    |
| Net weight | 0.070 kg |

#### Certificates

QB (CSTBat), ETA, KIWA, ÖVGW Wasser, SINTEF, SITAC, KOMO, STF, GOST-R, TSU, EMI

#### Applications

Potable water, Heating, Cooling, Sanitary

#### Solutions

Building installations, Industry, Utility

## Technical characteristics

|                                    |  |                                      |                    |
|------------------------------------|--|--------------------------------------|--------------------|
| Suitable for tap water             | ✓  | Outer pipe diameter connection 1     | 16 Millimetre      |
| Suitable for central heating water | ✓  | Number of branches                   | 2                  |
| Suitable for cooling water         | ✓  | Number of branching directions       | 1                  |
| Suitable for compressed air        | ✗  | Distance between offset              | 50 Millimetre      |
| Suitable for glycol                | ✓  | Max. medium temperature (continuous) | 70 Degrees celsius |
| Mounting method                    | Surface mounting                               | Width                                | 45 Millimetre      |
| Model                              | Distributor/collector                          | Height                               | 30 Millimetre      |
| Material                           | Plastic  | Length distributor                   | 124 Millimetre     |
| Material quality                   | Polyvinylidene fluoride (PVDF)                 |                                      |                    |
| Surface protection                 | Untreated                                      |                                      |                    |
| Shape                              | Throughflow with straight branches             |                                      |                    |
| Connection 1                       | Internal thread cylindrical BSPP-G (ISO 228-1) |                                      |                    |
| Nominal diameter connection 2      | 3/4 inch (20)                                  |                                      |                    |
| Connection 2                       | External thread cylindrical BSPP-G (ISO 228-1) |                                      |                    |
| Nominal diameter branches          | 3/4 inch (20)                                  |                                      |                    |
| Connection branches                | Euroconus (expired)                            |                                      |                    |
| Deviant distance between branches  | ✗  |                                      |                    |
| With filling/drain tap             | ✗  |                                      |                    |
| System specific                    | ✓  |                                      |                    |
| With shut-off valve                | ✗  |                                      |                    |
| With de-aeration                   | ✗  |                                      |                    |
| With wall-mounting bracket         | ✗  |                                      |                    |
| With mounting material             | ✗  |                                      |                    |
| With legs                          | ✗  |                                      |                    |