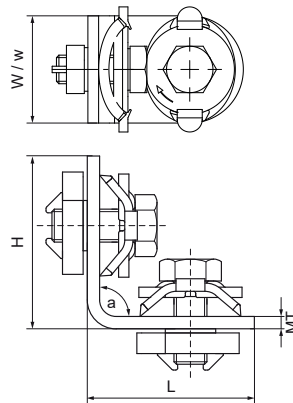


Walraven RapidRail® Connector 90° (S/S)

(G3507)

to make Walraven RapidRail® fabrications



Features & benefits

- connector with pre-assembled Walraven RapidRail® Slide nut(s)
- to make rail fabrications
- suitable for rails 27x18, 30x15, 30x20, 30x30, 30x45, 38x40
- ready-to-use pre-assembled for a quick fixing, and retains assembly in place before final tightening
- material: metal parts made of steel 1.0332; spring(s) made of POM (polyoxymethylene), green
- zinc plated
- For detailed technical information about our RAL marked products, please see the RAL datasheet in our web catalogue.



| Product Number | For Rail Type | Angle | Total Height | Total Width | Total Length | Material Thickness | Fixing Hole | Fixing Slot | Heart To Heart Distance | Torque Moment For Installation | Maximum Allowed Load Faz | Maximum Allowed Load Fax |
|-------------------------|--|----------|--------------|-------------|--------------|--------------------|-------------|-------------|-------------------------|--------------------------------|--------------------------|--------------------------|
| <i>Reference letter</i> | | <i>a</i> | <i>H</i> | <i>W</i> | <i>L</i> | <i>MT</i> | <i>FH</i> | <i>FS</i> | <i>k</i> | <i>T inst.</i> | <i>Fa,z</i> | <i>Fa,x</i> |
| <i>Unit description</i> | | ° | mm | mm | mm | mm | mm | mm | mm | Nm | N | N |
| 6584003 | 27x18, 30x15, 30x20, 30x30, 30x45, 38x40 | 90 | 53.5 | 30 | 53.5 | 3.00 | 8.2 | 12x4 | 50 | 15 | 1,186 | 345 |