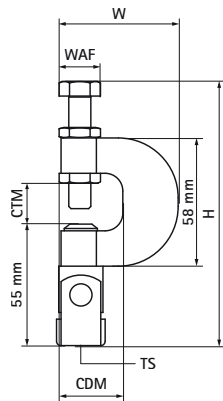


## Walraven Swivel Beam Clamp Model P

(K2030)

for clamping on beam flange



### Features & benefits

- multidirectional clamp
- for suspension on pitched flanges without welding or drilling
- up to flange thickness 17 mm
- according to VdS-regulations an additional safety strap should be used when supporting pipes above DN65
- articulation to 45° sideways, 90° forwards
- safety strap is obliged with VdS applications 1 and 4
- material: steel
- zinc plated
- with VdS-approval - certificate number G 4020003



Product Number	VVS Number	Maximum Clamping Thickness	Maximum Clamping Depth	Total Height	Total Width	Total Depth	Thread Size	Width Across Flats	Maximum Allowed Load Faz	Approvals
Reference letter		CTM	CDM	H	W	DtT	TS	WAF	F <sub>0,z</sub>	
Unit description		mm	mm	mm	mm	mm		mm	N	
6078010	018061210	17	27	168	53	28	M10	17	2,500	FM, VdS