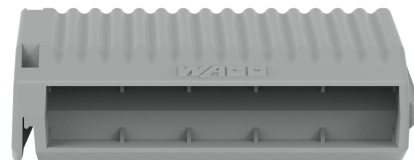


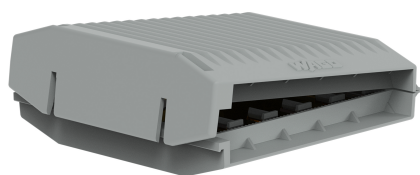
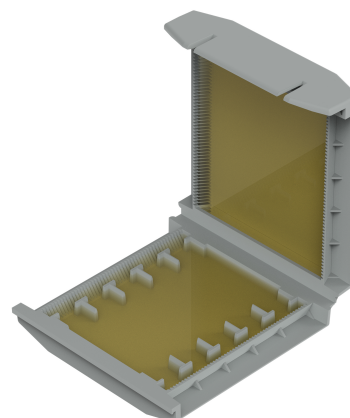
Data Sheet | Item Number: 207-1375

Gelbox; inline connection; for cables; with gel; 221 Series; max. 4 mm² connectors;
without splicing connectors; Size 3; gray

<https://www.wago.com/207-1375>



Color: ■ gray





Application Examples

- Bathroom installation (DIN VDE 0100-701)
- Washing facilities/irrigation systems
- Farms and garden centers (DIN VDE 0100-0705)
- Swimming pool areas (DIN VDE 0100-702)
- Parking lot lighting
- Charging stations and lighting systems in ports

Note on Packaging Unit (PU) and Subpackaging Unit (SPU):

If you order a full PU, you will receive our eco-friendly, sustainable cardboard blisters packed in a shelf-ready box.
If you order a quantity smaller than a full PU, you will receive the eco-friendly, sustainable cardboard blisters without a shelf-ready box.

Please refer to the system description for the splicing connectors that can be used.

Your Benefits:

- Easy, fast and safe to use
- Can be used immediately and accessed again later
- Silicon-free
- Label-free
- Suitable for indefinite storage
- The complete system, which consists of gelboxes and WAGO splicing connectors, has been VDE-tested and IPX8-certified.

Connection data		
Connection 1		
Actuation type	Locking system	
Physical data		
Width	60.7 mm / 2.362 inches	
Height	17.8 mm / 0.669 inches	
Depth	56.9 mm / 2.205 inches	
Mechanical data		
Design	Size 3	
Mounting type	Flying leads	
Protection type	IPX8	
Suitable	for 4 mm² inline splicing connectors	
Material data		
Note (material data)	Information on material specifications can be found here	
Color	gray	
Housing material	Polypropylene	
Fire load	0 MJ	
Weight	40.4 g	



Environmental requirements	
Ambient temperature (operation)	-55 ... +85 °C
Ambient temperature (storage)	0 ... +40 °C

Commercial data	
PU (SPU)	14 (2) pcs
Packaging type	Box
Country of origin	IT
GTIN	4066966809879
Customs tariff number	85389099990

Product Classification	
UNSPSC	39121402
ETIM 9.0	EC001170
ETIM 8.0	EC001170
ECCN	NO US CLASSIFICATION

Environmental Product Compliance	
RoHS Compliance Status	Compliant,No Exemption

Approvals / Certificates	
General approvals	



Approval	Standard	Certificate Name
VDE VDE Prüf- und Zertifizierungsinstitut	EN 60998	40051938

Downloads	
Environmental Product Compliance	
Compliance Search	
Environmental Product Compliance 207-1375	

Documentation		
System Description		
System Description 207 Series Gel boxes	pdf 1156.45 KB	
System Description 207 Series Gel boxes	pdf 1191.37 KB	

Installation Notes

Installation



Open the Gelbox at the side latches.



Place the wired connector in the Gelbox.



Close the Gelbox.



Close latch securely.



Re-accessible:
Open the Gelbox, remove the gel, open the connector and rewire with new components.

Application



For low voltage applications > 50 V, use the Gelbox in a junction box.



Connecting a path light.



Lift the flap and pull the cover perforation forward.



Press in the perforation on the sides.



Tear off the cover from the perforation.



As a counter display: Bend the rear flap at the fold, straighten it and fix it in the cardboard cut-out



If the flap is not required, tear off from the perforation.